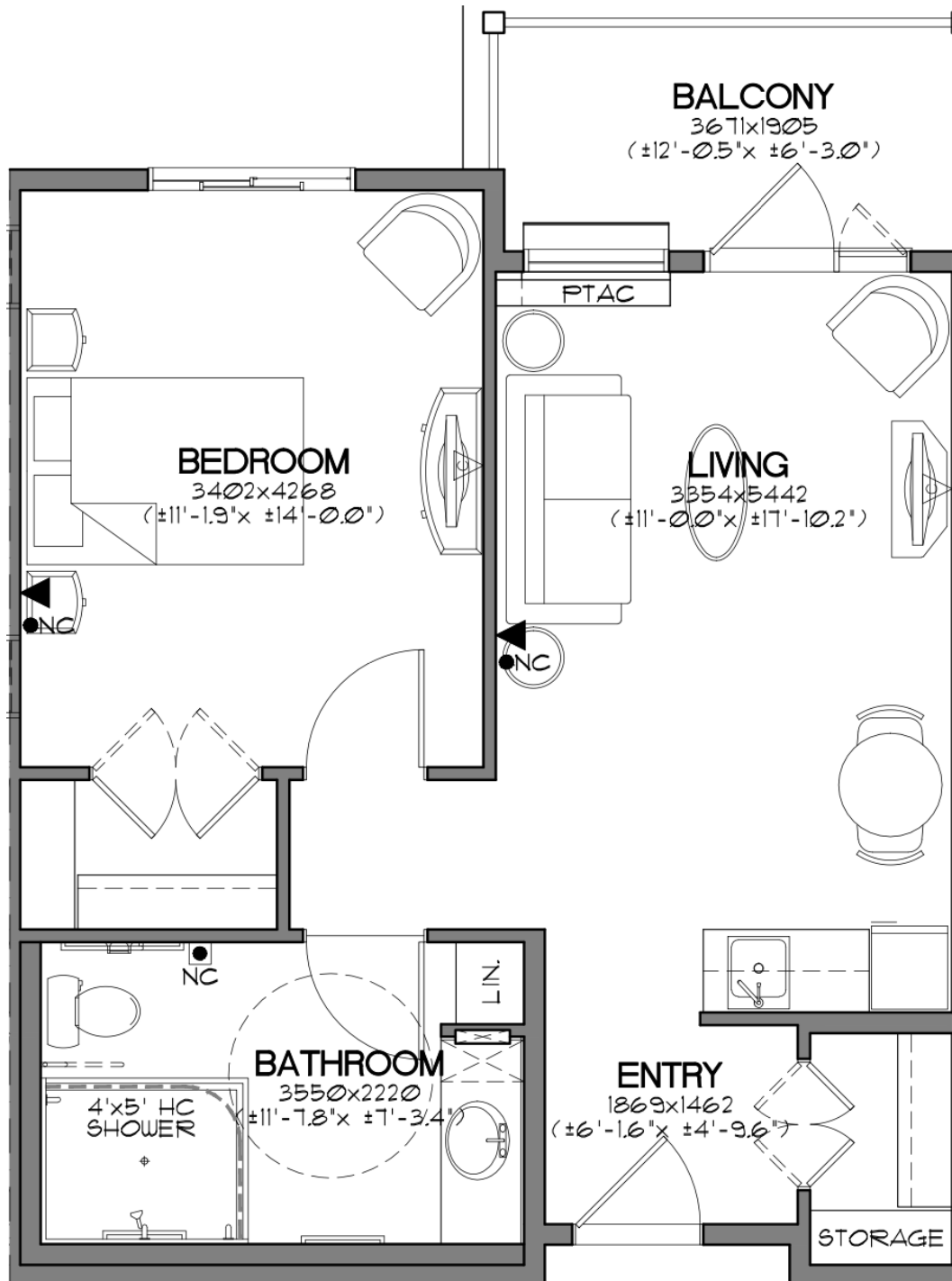




**LEWIS**  
ESTATES

An OPTIMA LIVING Community



**Unit B** Approximately 663 sq. ft.

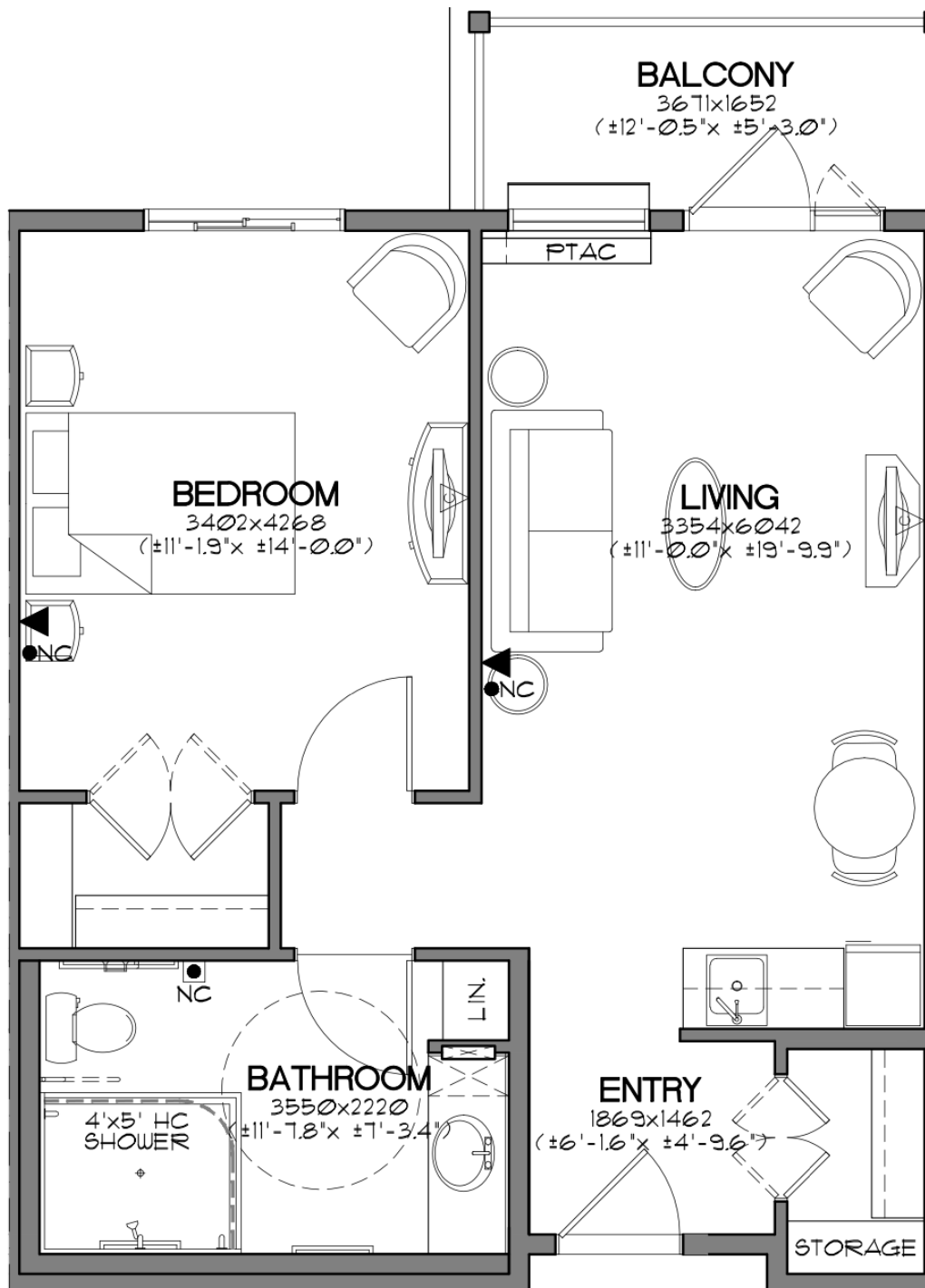


780-452-2273 | 9310 - 211 Street, Edmonton | [lewisestates.ca](http://lewisestates.ca)



**LEWIS**  
ESTATES

An OPTIMA LIVING Community



**Unit B-2** Approximately 677 sq. ft.

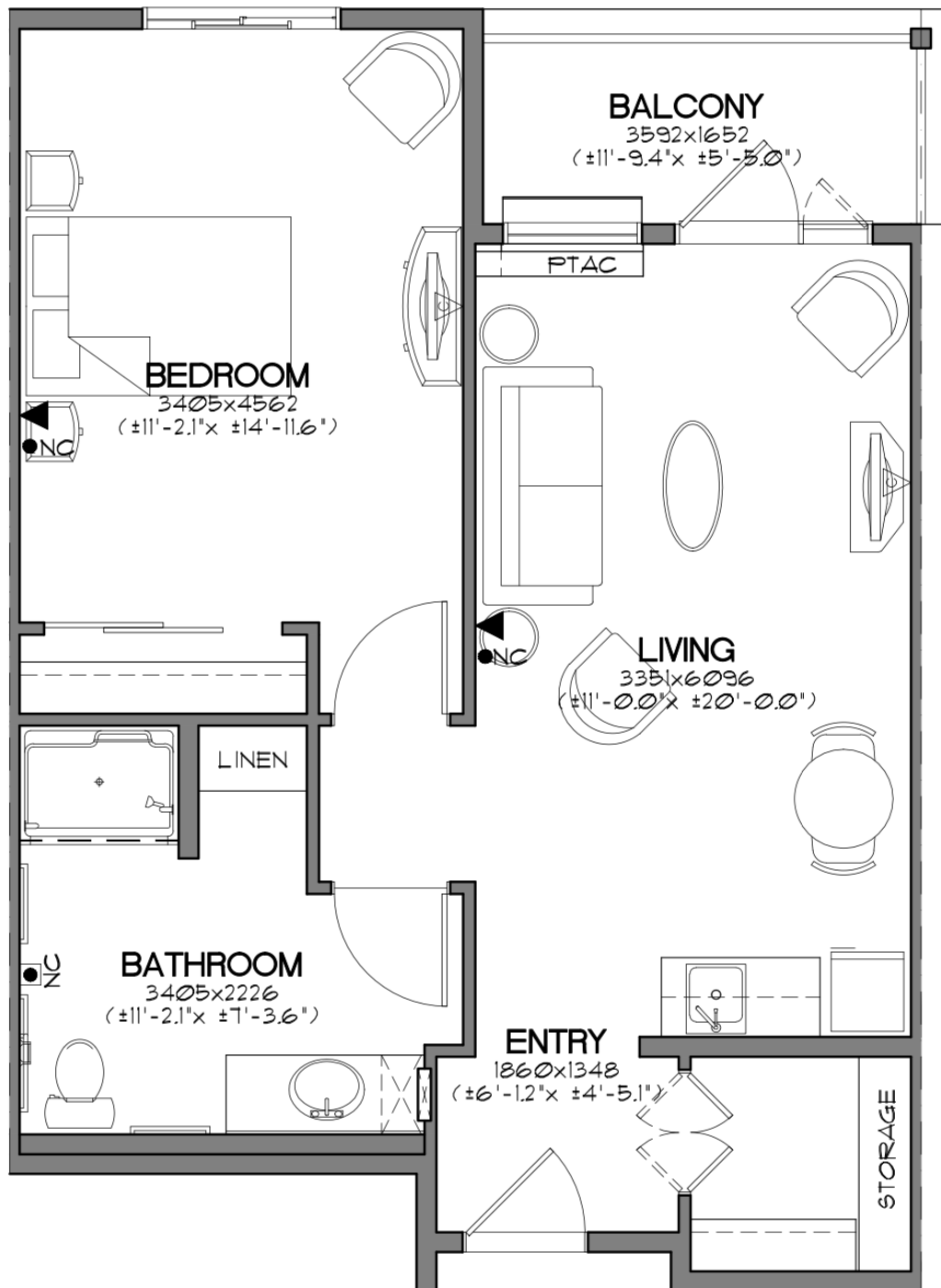


780-452-2273 | 9310 - 211 Street, Edmonton | [lewisestates.ca](http://lewisestates.ca)



**LEWIS**  
ESTATES

An OPTIMA LIVING Community



**Unit B-3** Approximately 731 sq. ft.

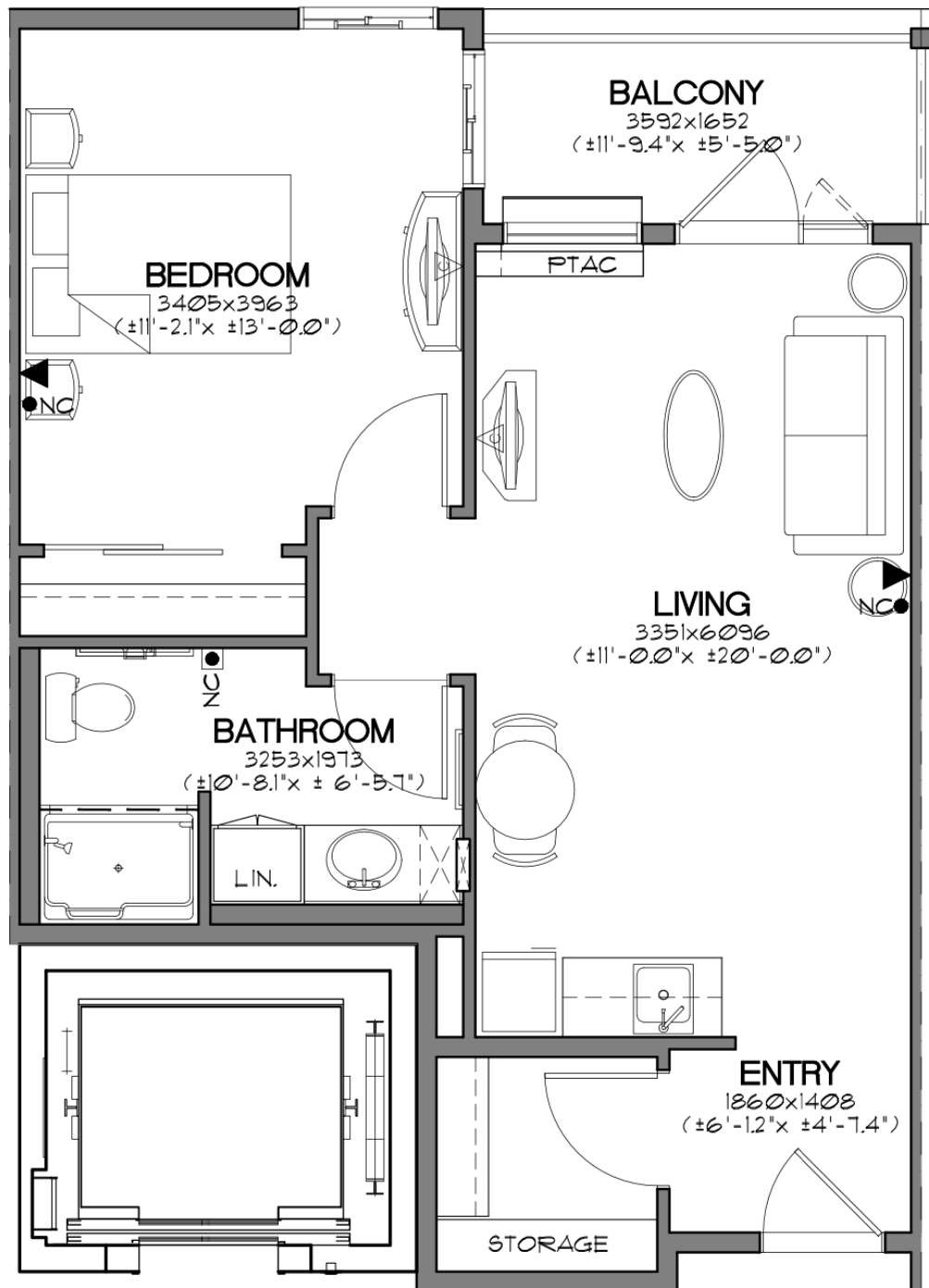


780-452-2273 | 9310 - 211 Street, Edmonton | [lewisestates.ca](http://lewisestates.ca)



**LEWIS**  
ESTATES

An OPTIMA LIVING Community



**Unit B-4** Approximately 651 sq. ft.

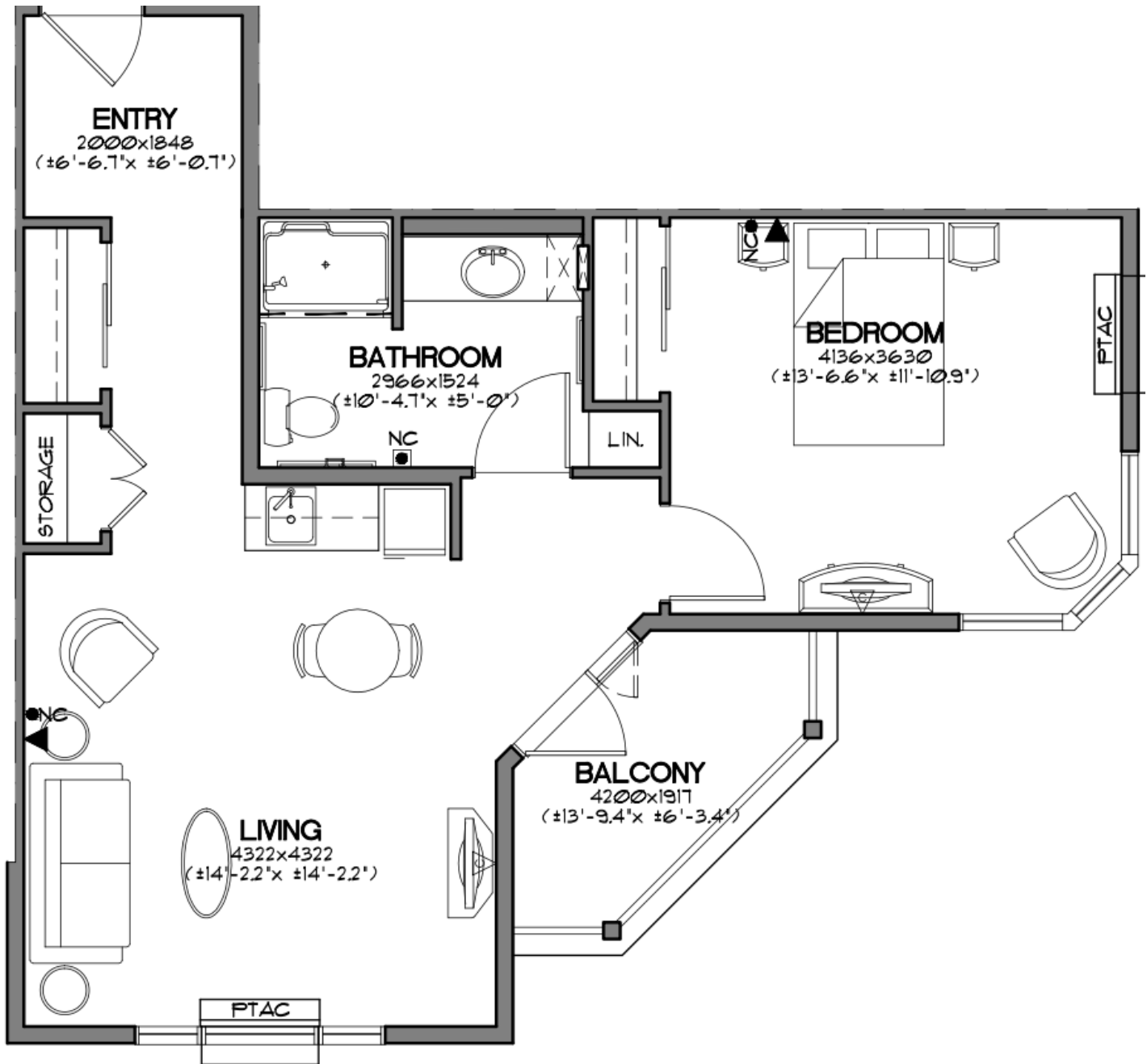


780-452-2273 | 9310 - 211 Street, Edmonton | [lewisestates.ca](http://lewisestates.ca)



**LEWIS**  
ESTATES

An OPTIMA LIVING Community



**Unit B-5** Approximately 698 sq. ft.

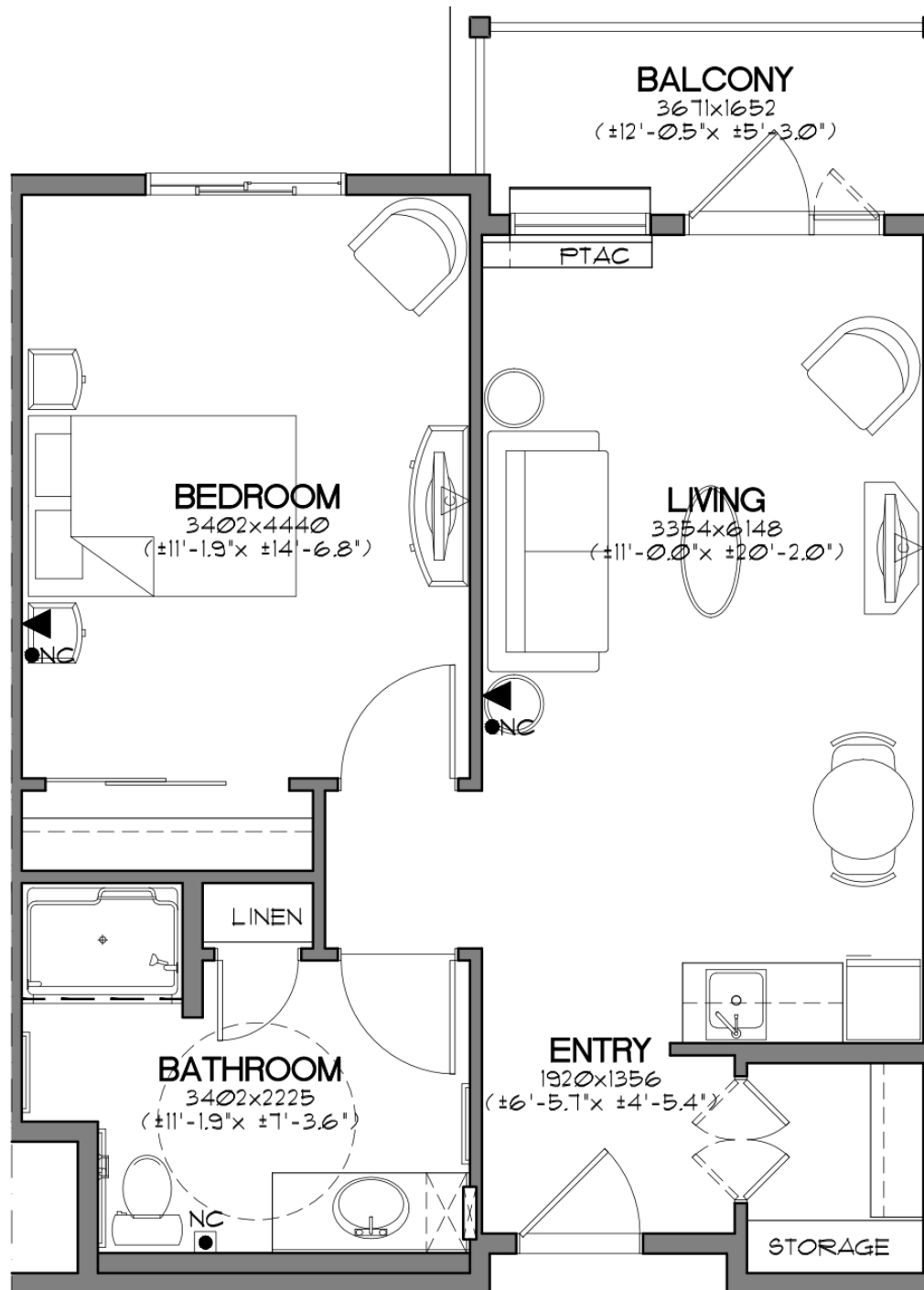


780-452-2273 | 9310 - 211 Street, Edmonton | [lewisestates.ca](http://lewisestates.ca)



**LEWIS**  
ESTATES

An OPTIMA LIVING Community



**Unit B-6** Approximately 682 sq. ft.

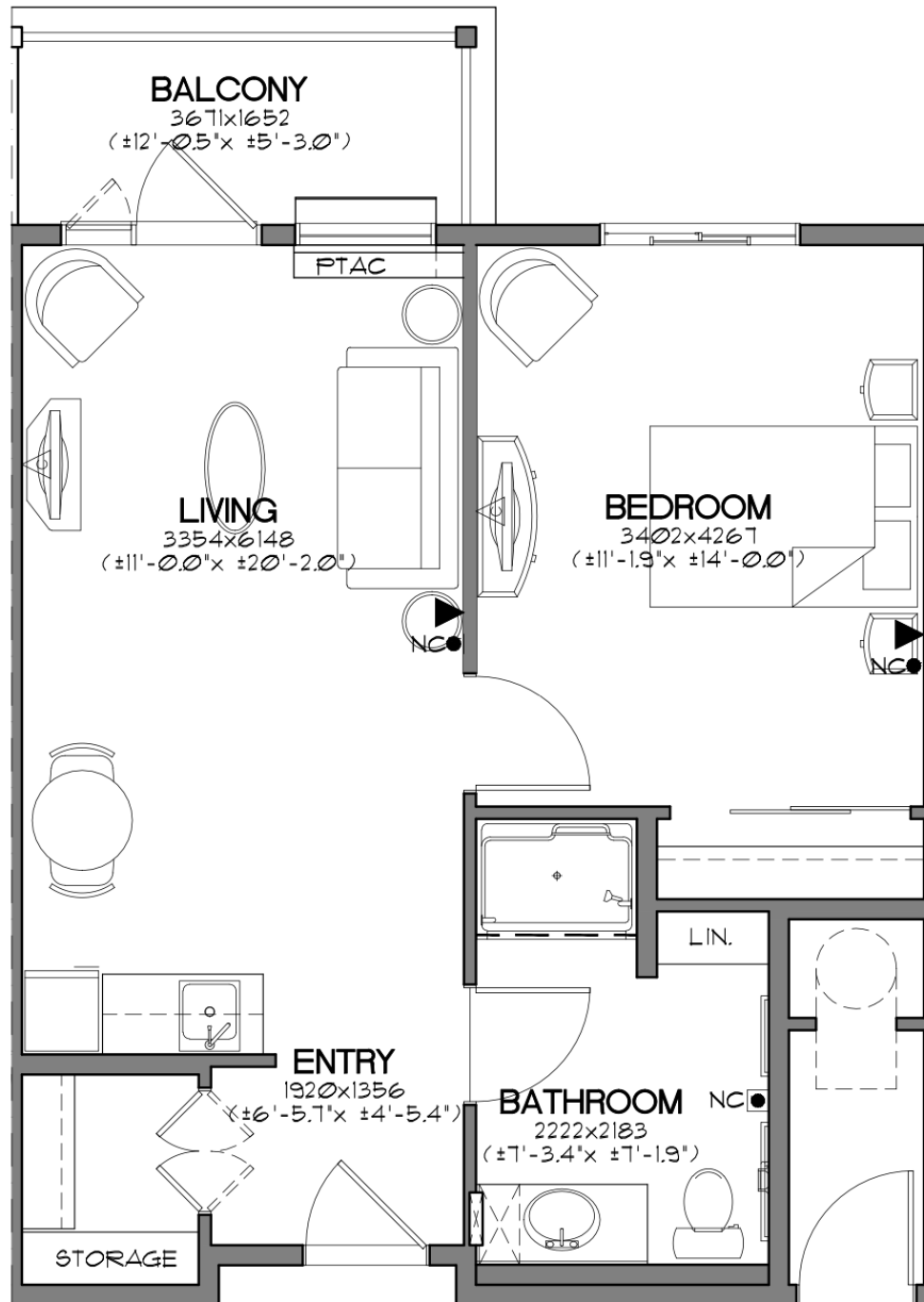


780-452-2273 | 9310 - 211 Street, Edmonton | [lewisestates.ca](http://lewisestates.ca)



**LEWIS**  
ESTATES

An OPTIMA LIVING Community



**Unit B-7G** Approximately 682 sq. ft.

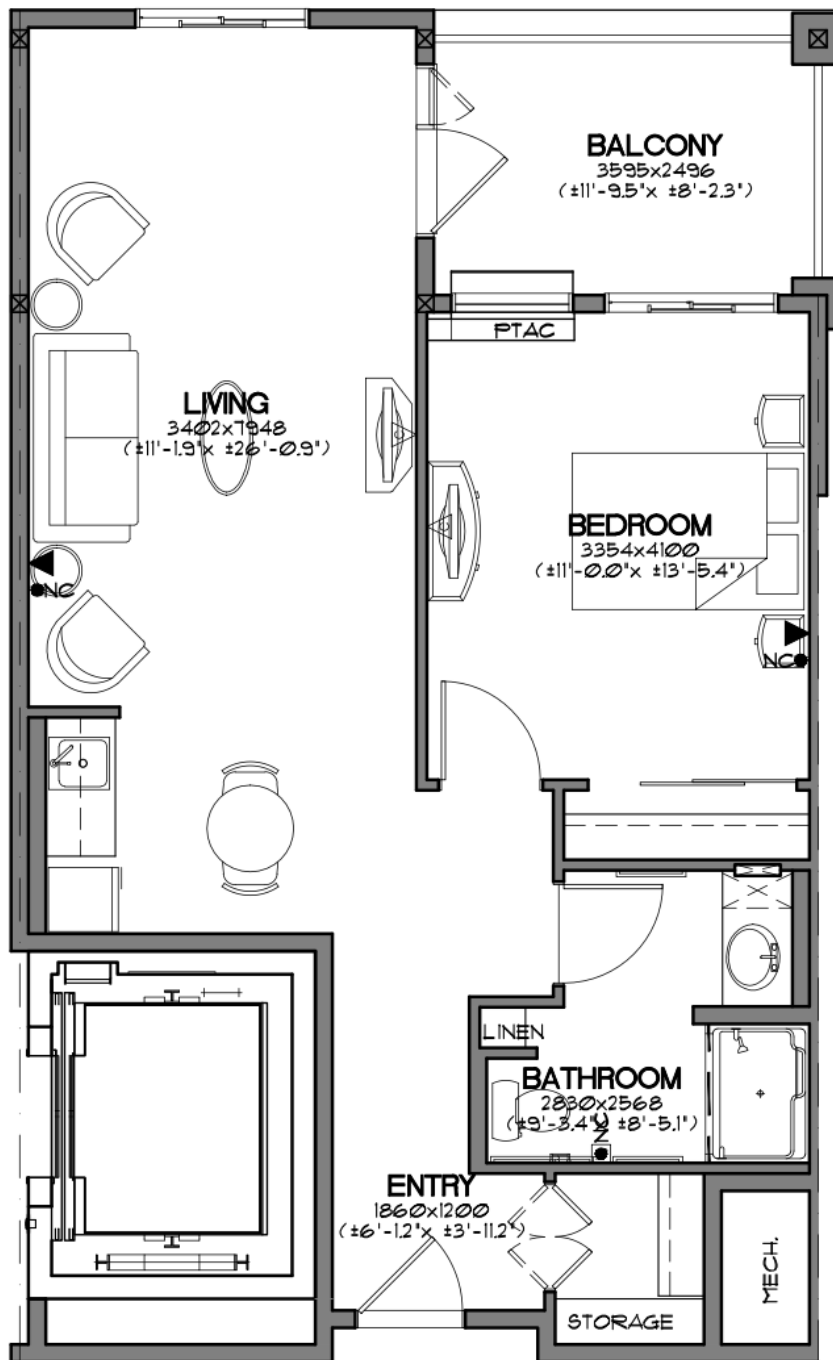


780-452-2273 | 9310 - 211 Street, Edmonton | [lewisestates.ca](http://lewisestates.ca)



**LEWIS**  
ESTATES

An OPTIMA LIVING Community



**Unit B-8** Approximately 682 sq. ft.



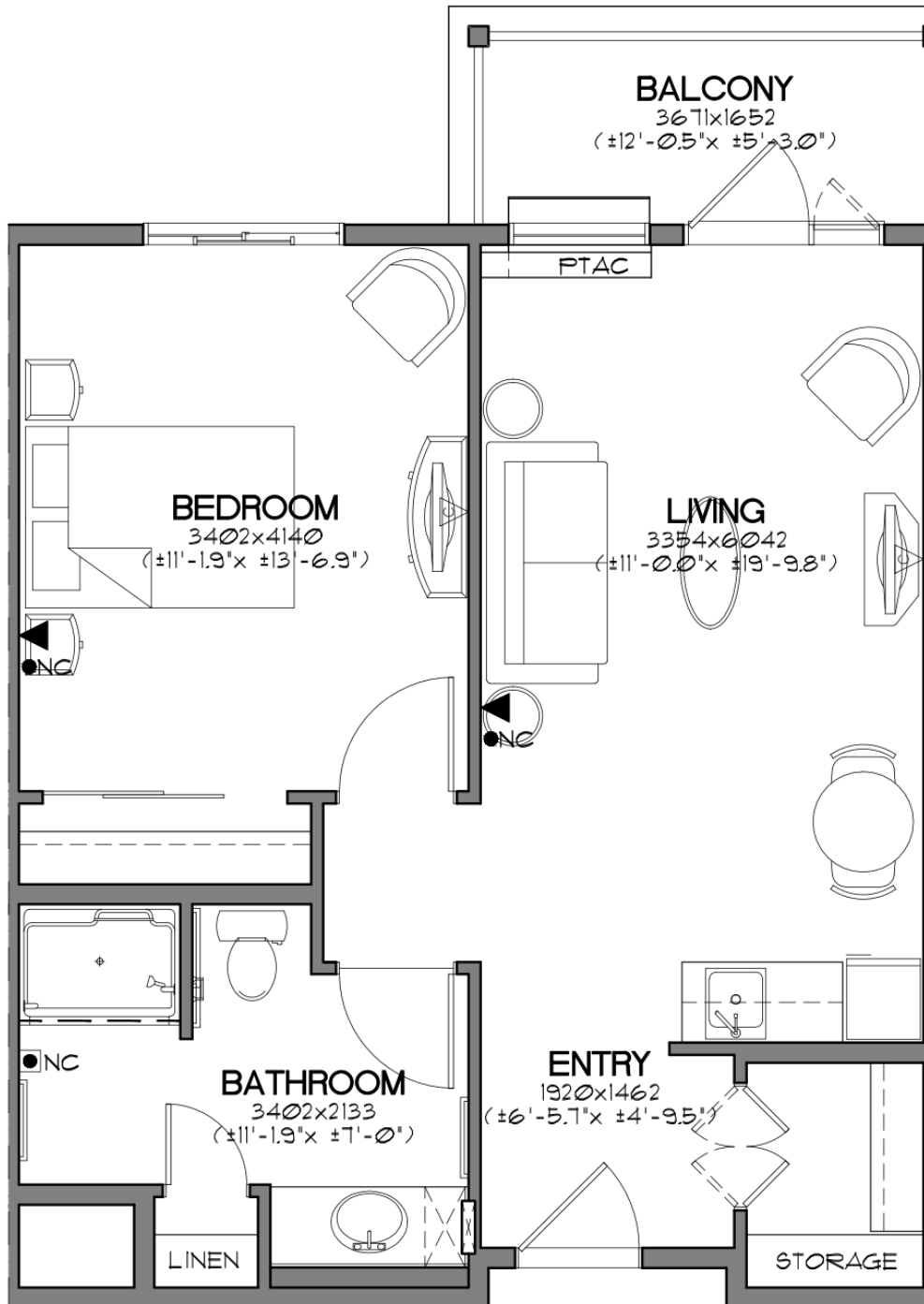
780-452-2273 | 9310 - 211 Street, Edmonton | [lewisestates.ca](http://lewisestates.ca)





**LEWIS**  
ESTATES

An OPTIMA LIVING Community



**Unit B-9** Approximately 669 sq. ft.



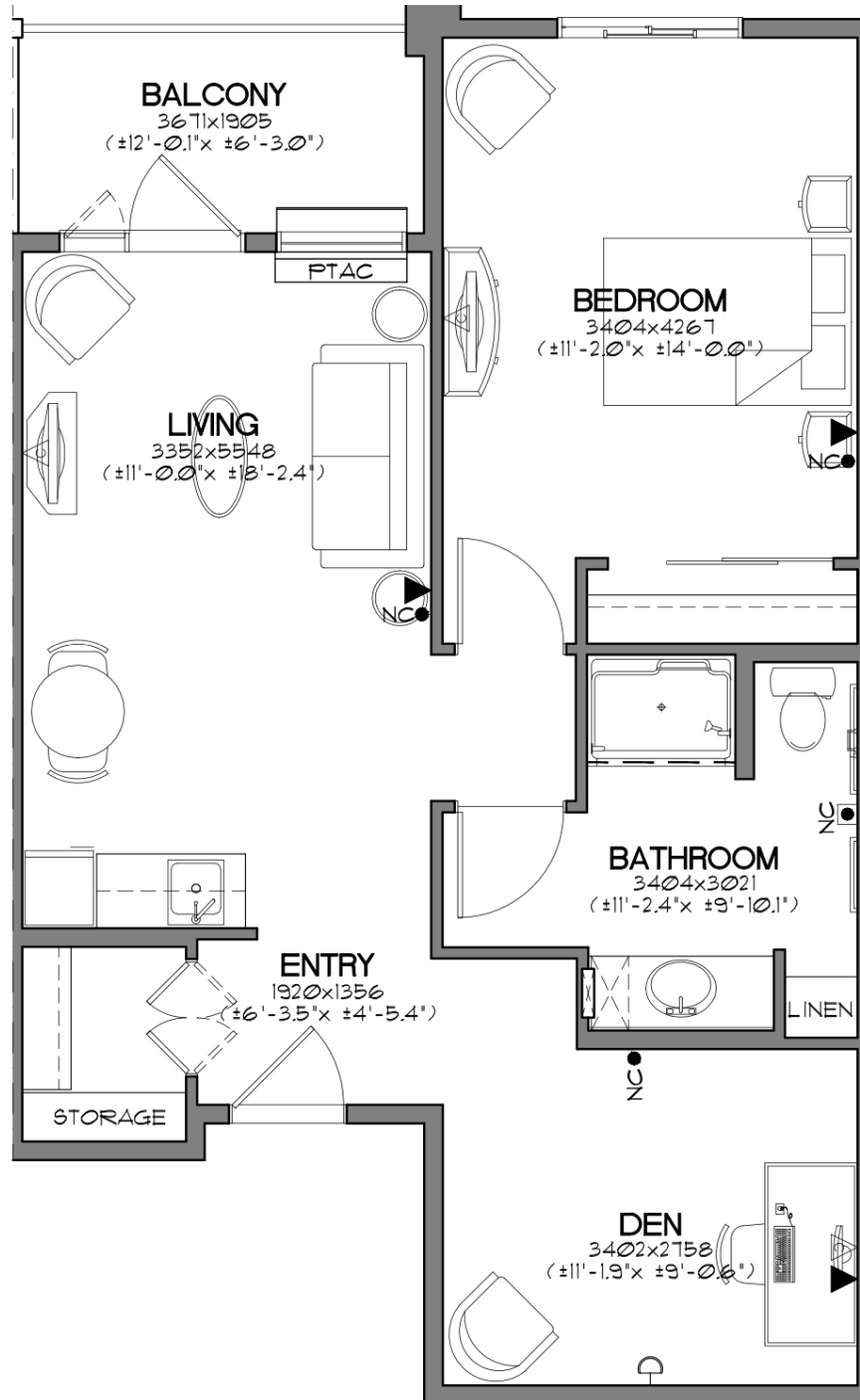
780-452-2273 | 9310 - 211 Street, Edmonton | [lewisestates.ca](http://lewisestates.ca)





**LEWIS**  
ESTATES

An OPTIMA LIVING Community



**Unit BD-2** Approximately 741 sq. ft.

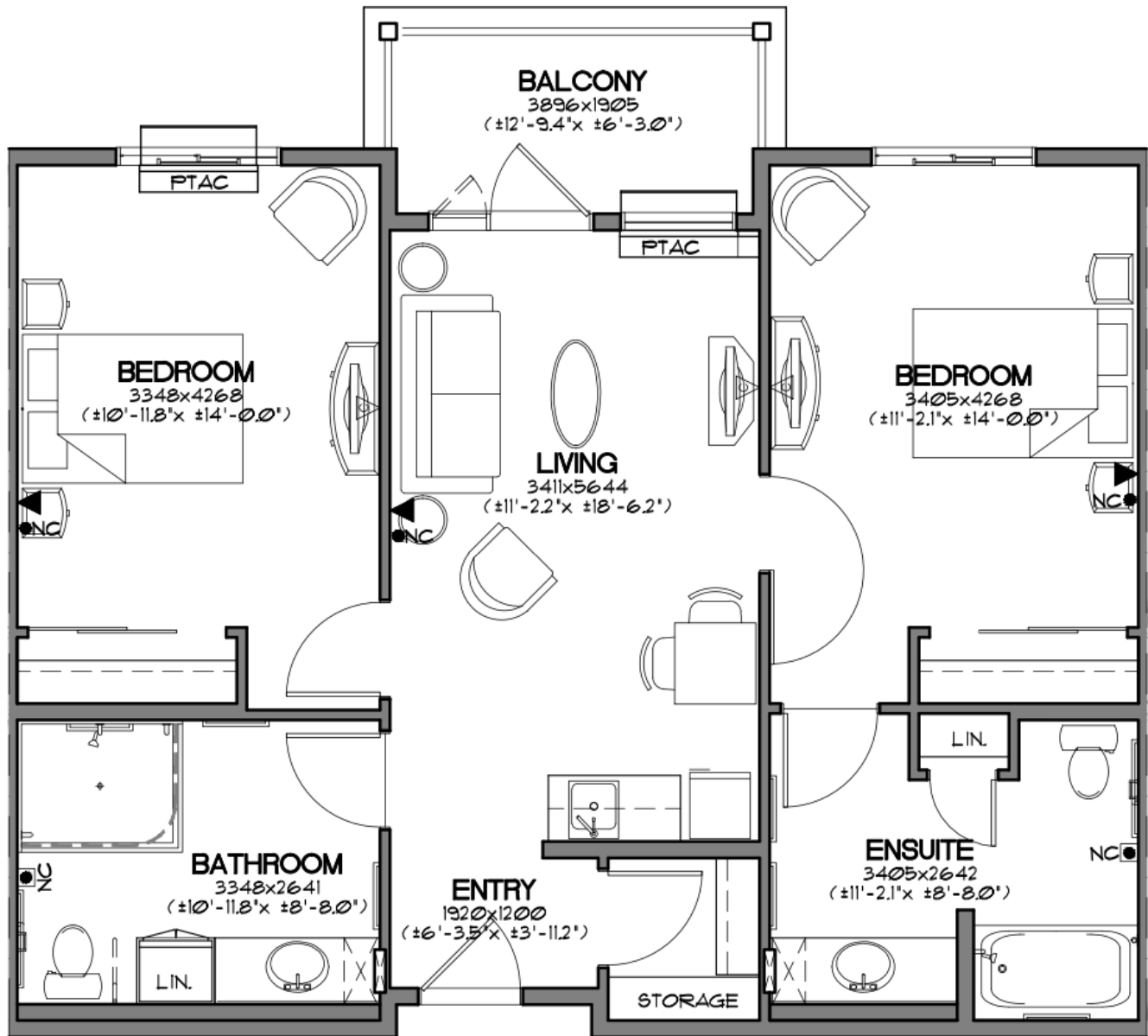


780-452-2273 | 9310 - 211 Street, Edmonton | [lewisestates.ca](http://lewisestates.ca)



**LEWIS**  
ESTATES

An OPTIMA LIVING Community



**Unit C-1** Approximately 976 sq. ft.

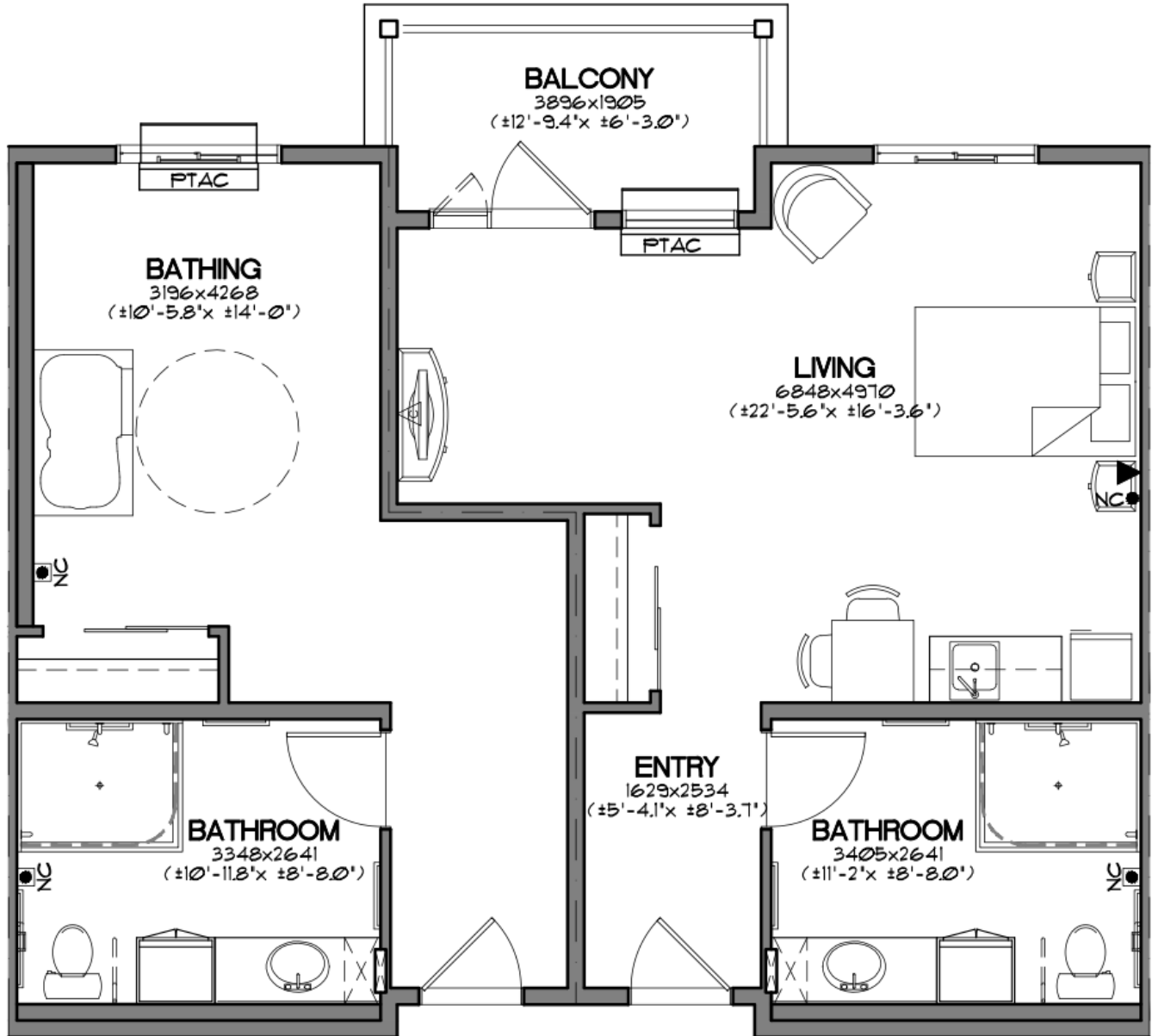


780-452-2273 | 9310 - 211 Street, Edmonton | [lewisestates.ca](http://lewisestates.ca)



**LEWIS**  
ESTATES

An OPTIMA LIVING Community



**Unit C-1-R2** Approximately 577 sq. ft.

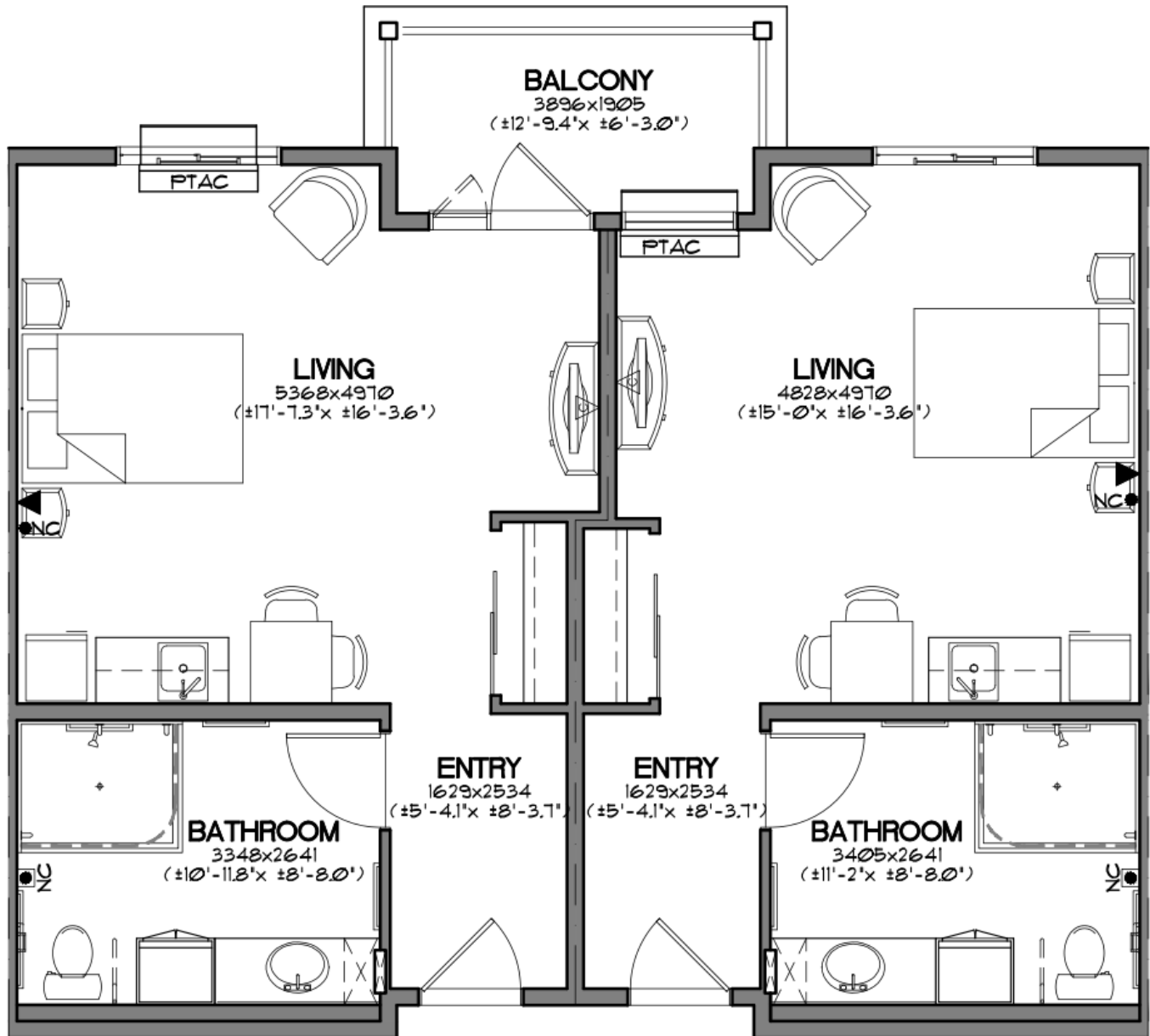


780-452-2273 | 9310 - 211 Street, Edmonton | [lewisestates.ca](http://lewisestates.ca)



**LEWIS**  
ESTATES

An OPTIMA LIVING Community



**Unit C-1B-R** Approximately 441 sq. ft.

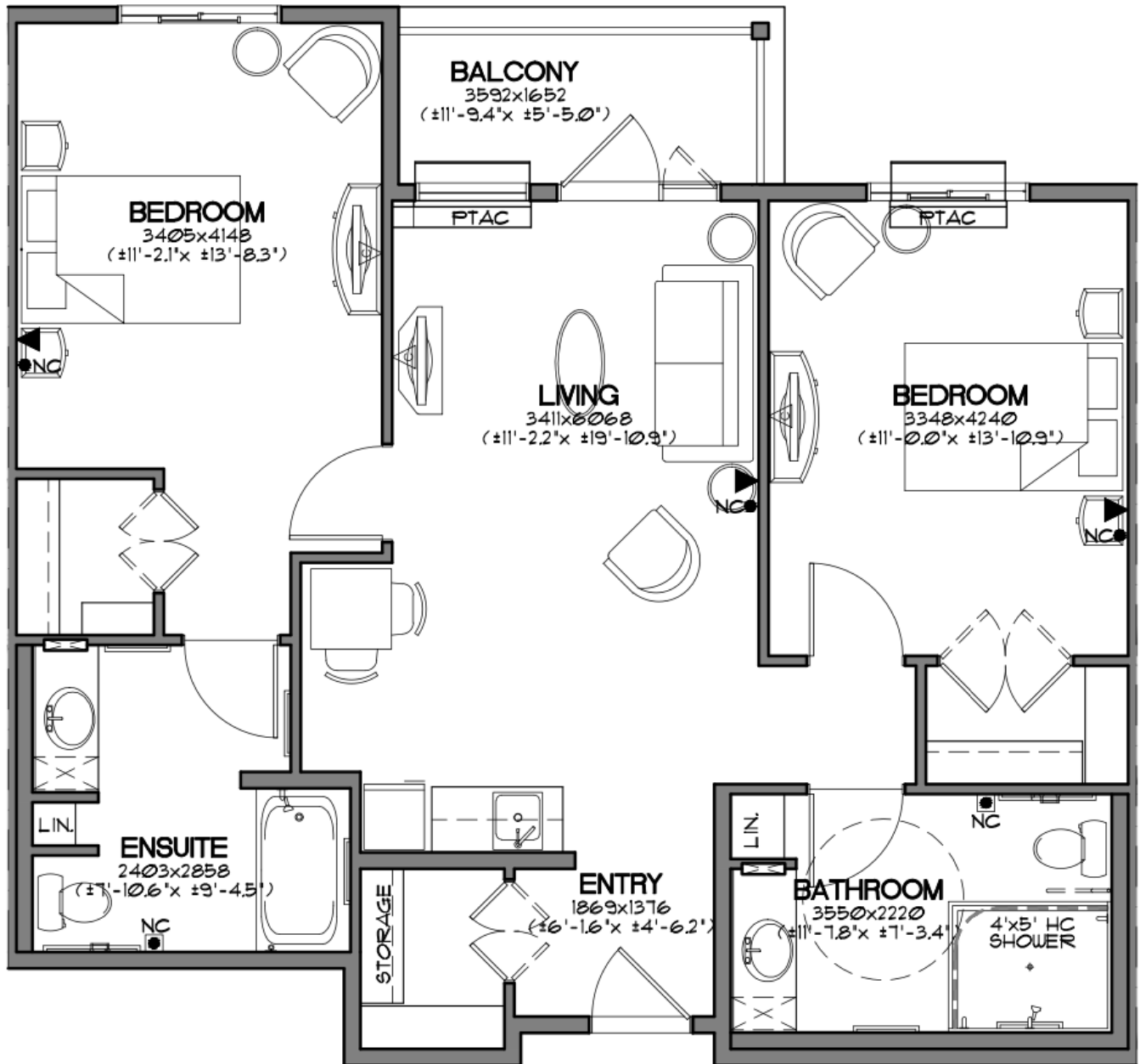


780-452-2273 | 9310 - 211 Street, Edmonton | [lewisestates.ca](http://lewisestates.ca)



**LEWIS**  
ESTATES

An OPTIMA LIVING Community



**Unit C-2** Approximately 1019 sq. ft.

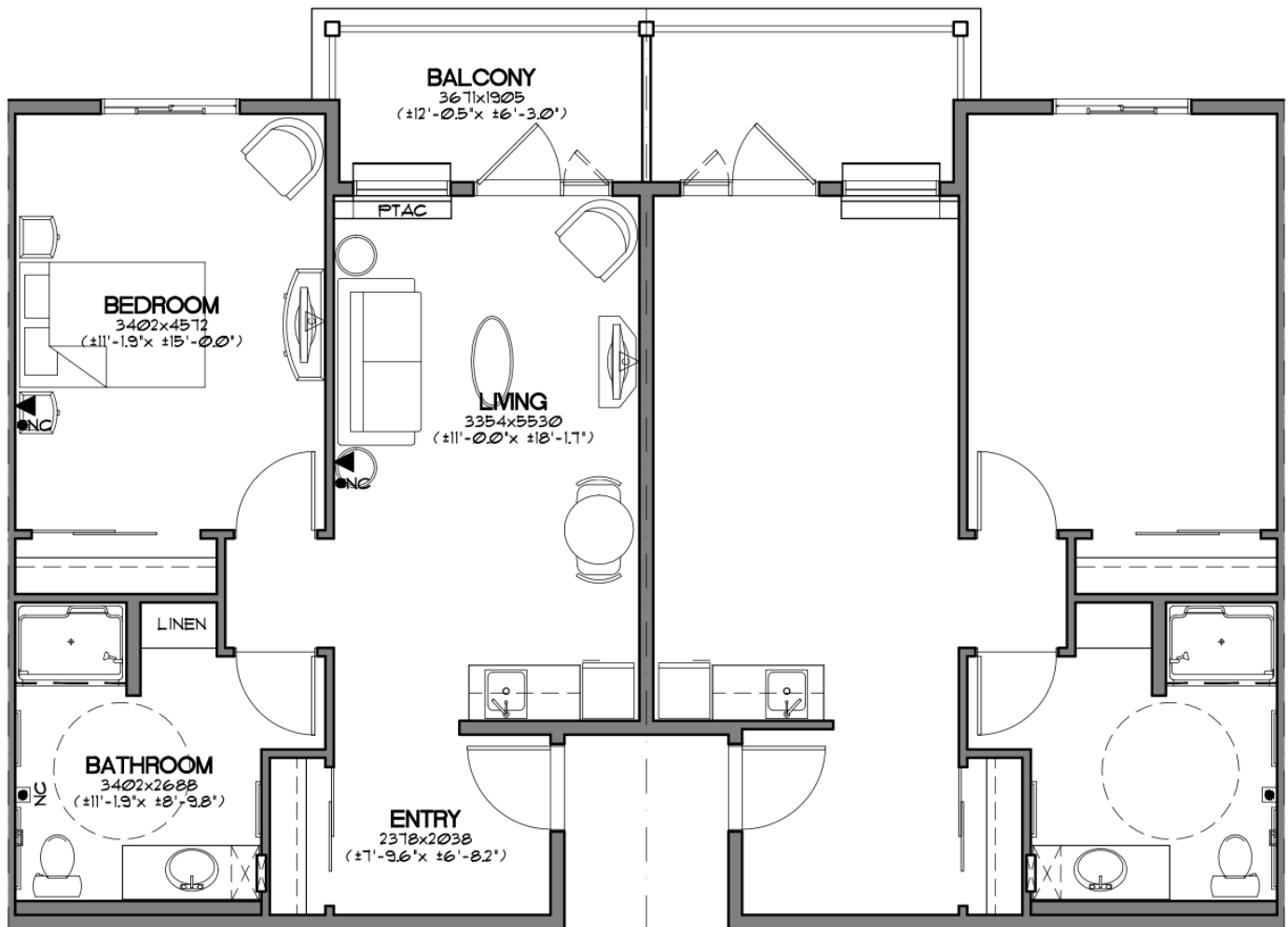


780-452-2273 | 9310 - 211 Street, Edmonton | [lewisestates.ca](http://lewisestates.ca)



**LEWIS**  
ESTATES

An OPTIMA LIVING Community



**Unit D** Approximately 695 sq. ft.



780-452-2273 | 9310 - 211 Street, Edmonton | [lewisestates.ca](http://lewisestates.ca)