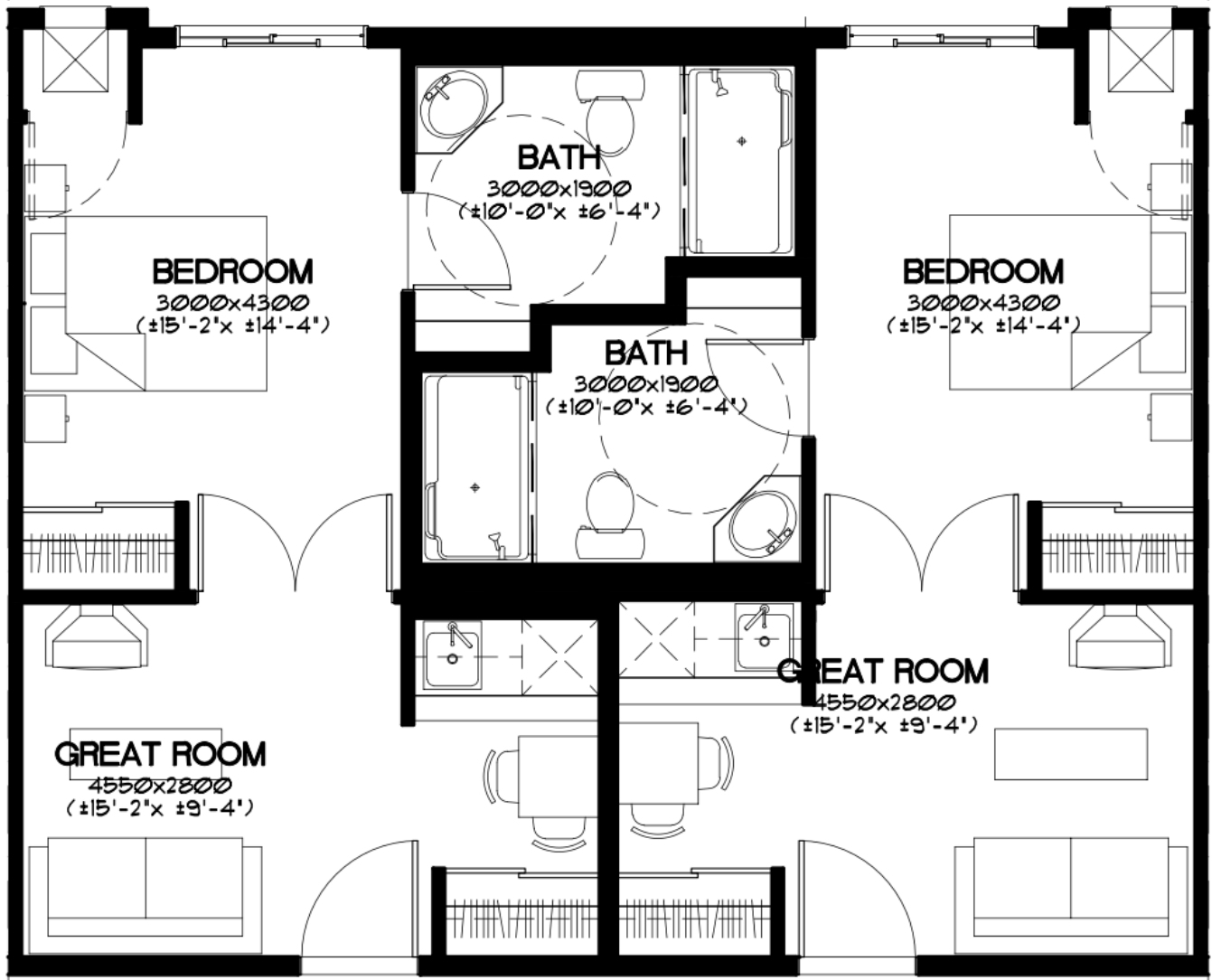




RUTHERFORD HEIGHTS

An OPTIMA LIVING Community



Unit A-1

Approximately 381 sq. ft.

Unit A-2

Approximately 379 sq. ft.

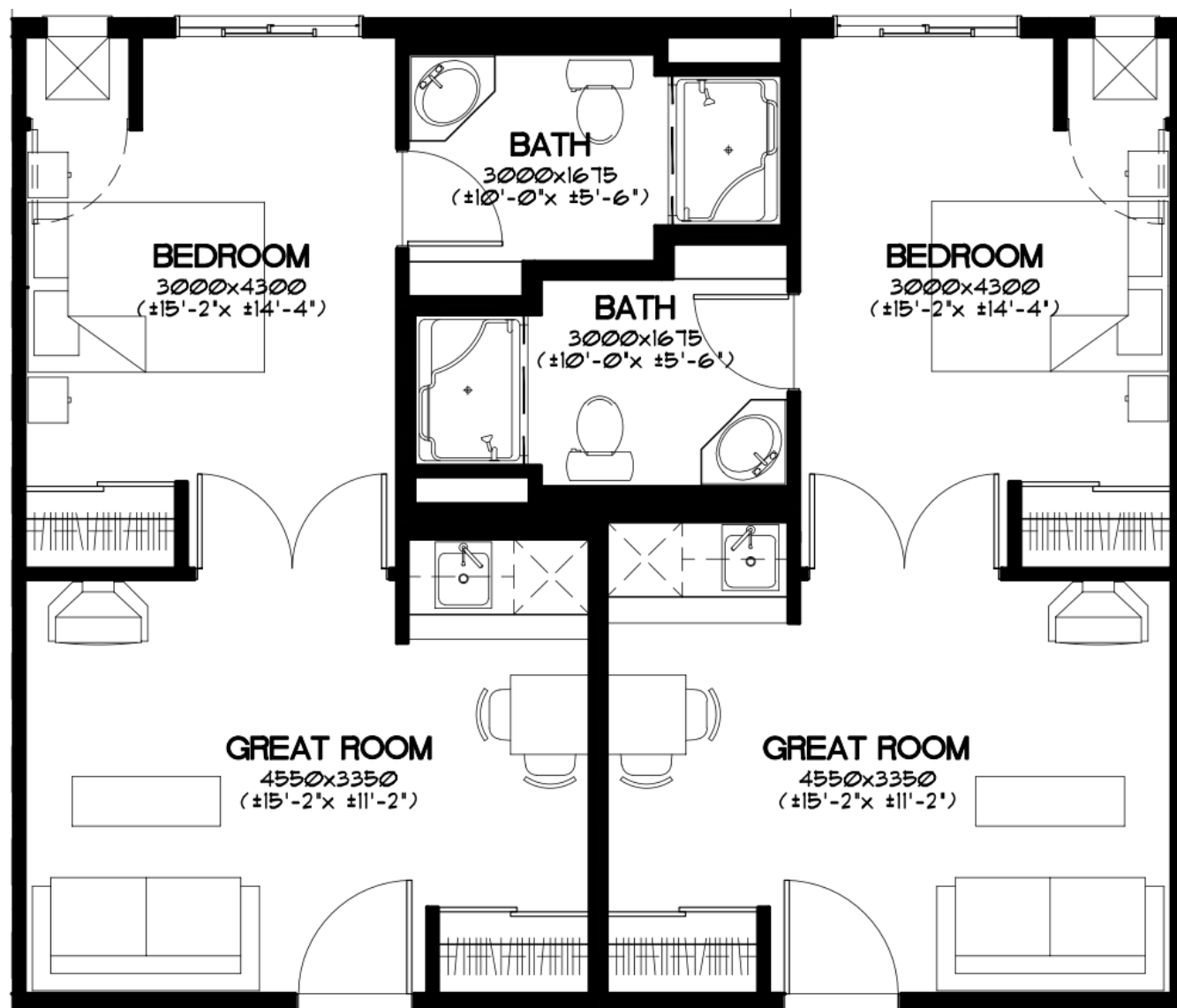


780-432-6900 | 949 Rutherford Road, Edmonton | rutherfordheights.com



RUTHERFORD HEIGHTS

An OPTIMA LIVING Community



Unit A-3

Approximately 408 sq. ft.

Unit A-4

Approximately 405 sq. ft.

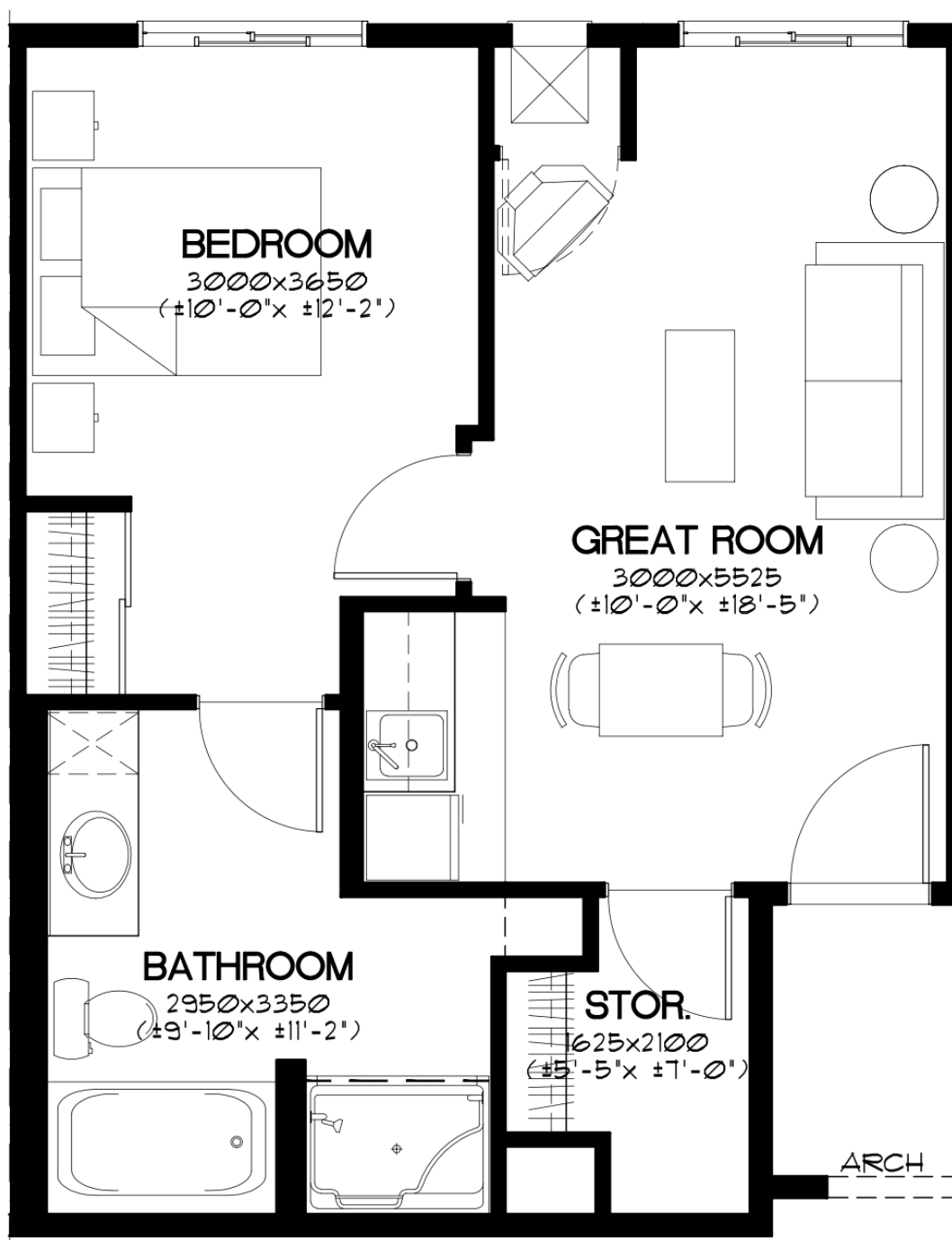


780-432-6900 | 949 Rutherford Road, Edmonton | rutherfordheights.com



RUTHERFORD HEIGHTS

An OPTIMA LIVING Community



Unit B-1-C Approximately 539 sq. ft.

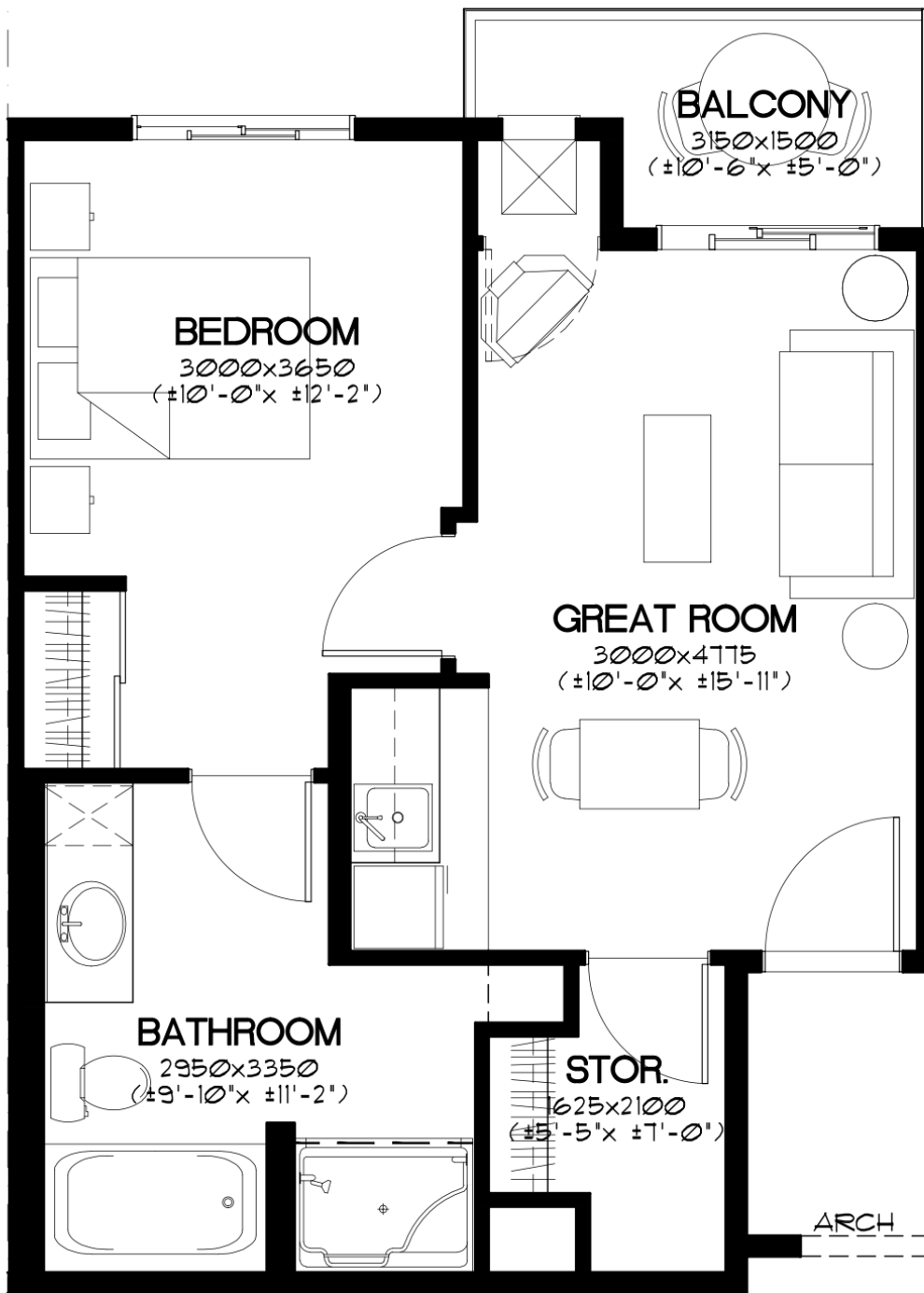


780-432-6900 | 949 Rutherford Road, Edmonton | rutherfordheights.com



RUTHERFORD HEIGHTS

An OPTIMA LIVING Community



Unit B-1 Approximately 521 sq. ft.

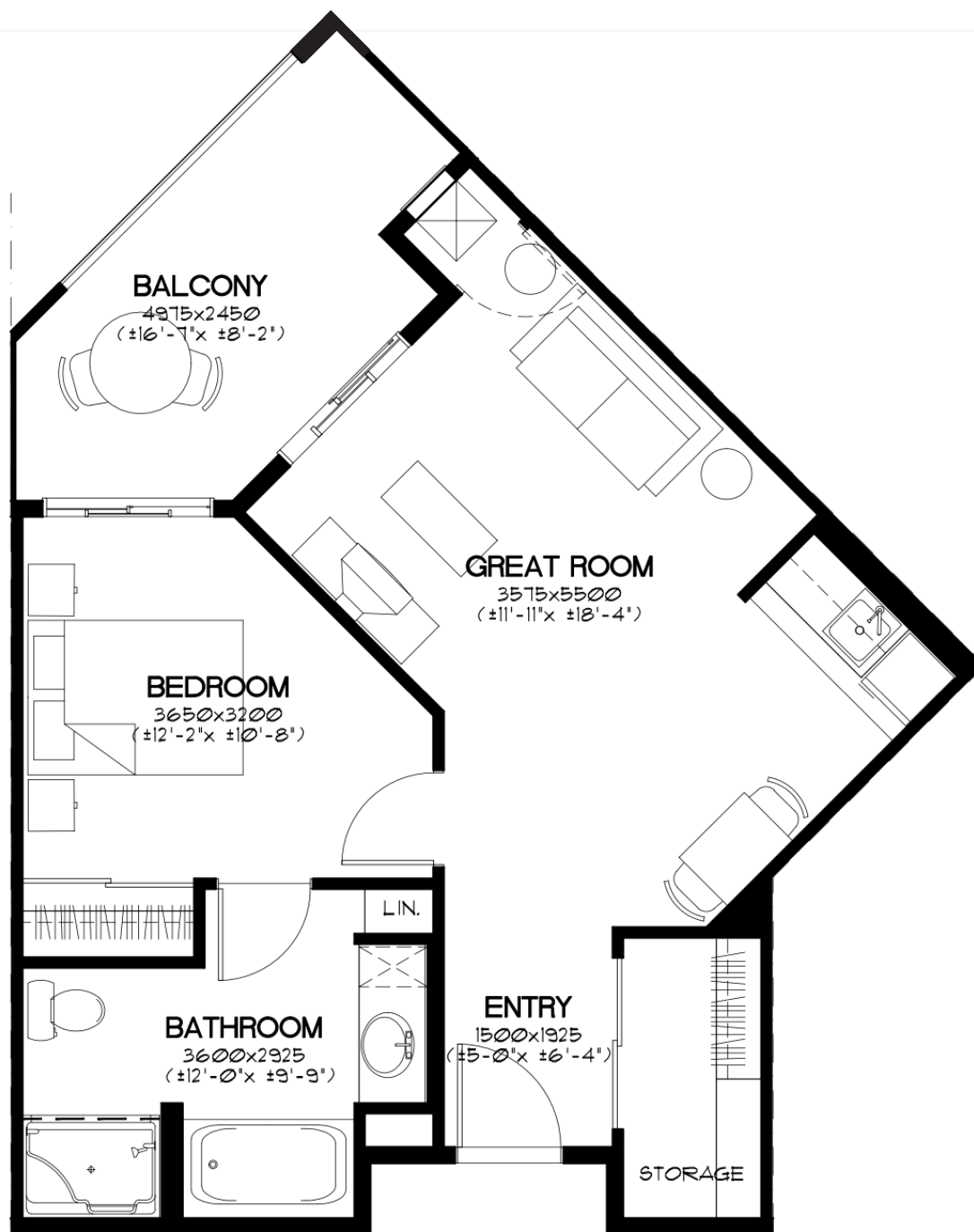


780-432-6900 | 949 Rutherford Road, Edmonton | rutherfordheights.com



RUTHERFORD HEIGHTS

An OPTIMA LIVING Community



Unit B-2 Approximately 594 sq. ft.

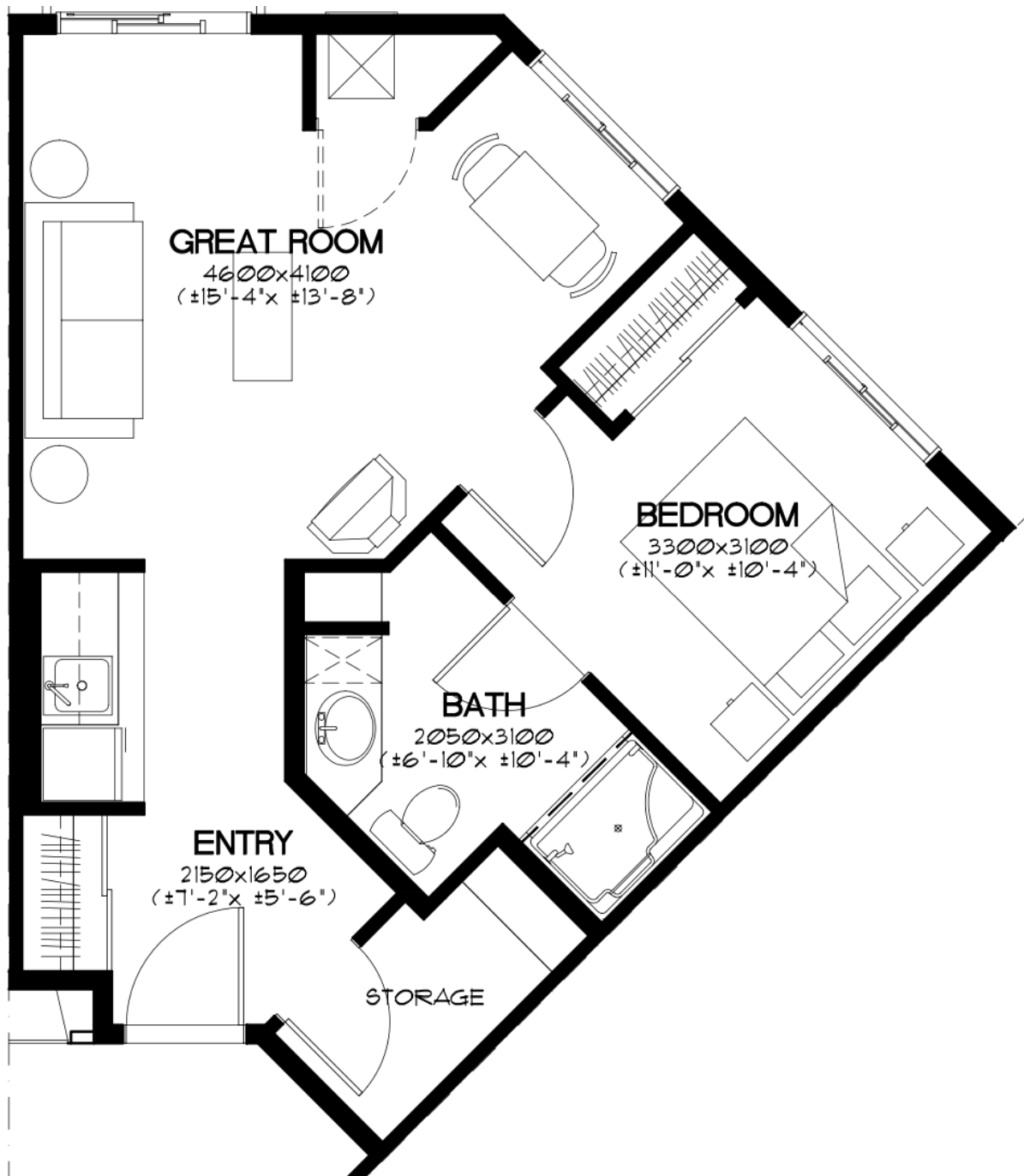


780-432-6900 | 949 Rutherford Road, Edmonton | rutherfordheights.com



RUTHERFORD HEIGHTS

An OPTIMA LIVING Community



Unit B-3 Approximately 508 sq. ft.

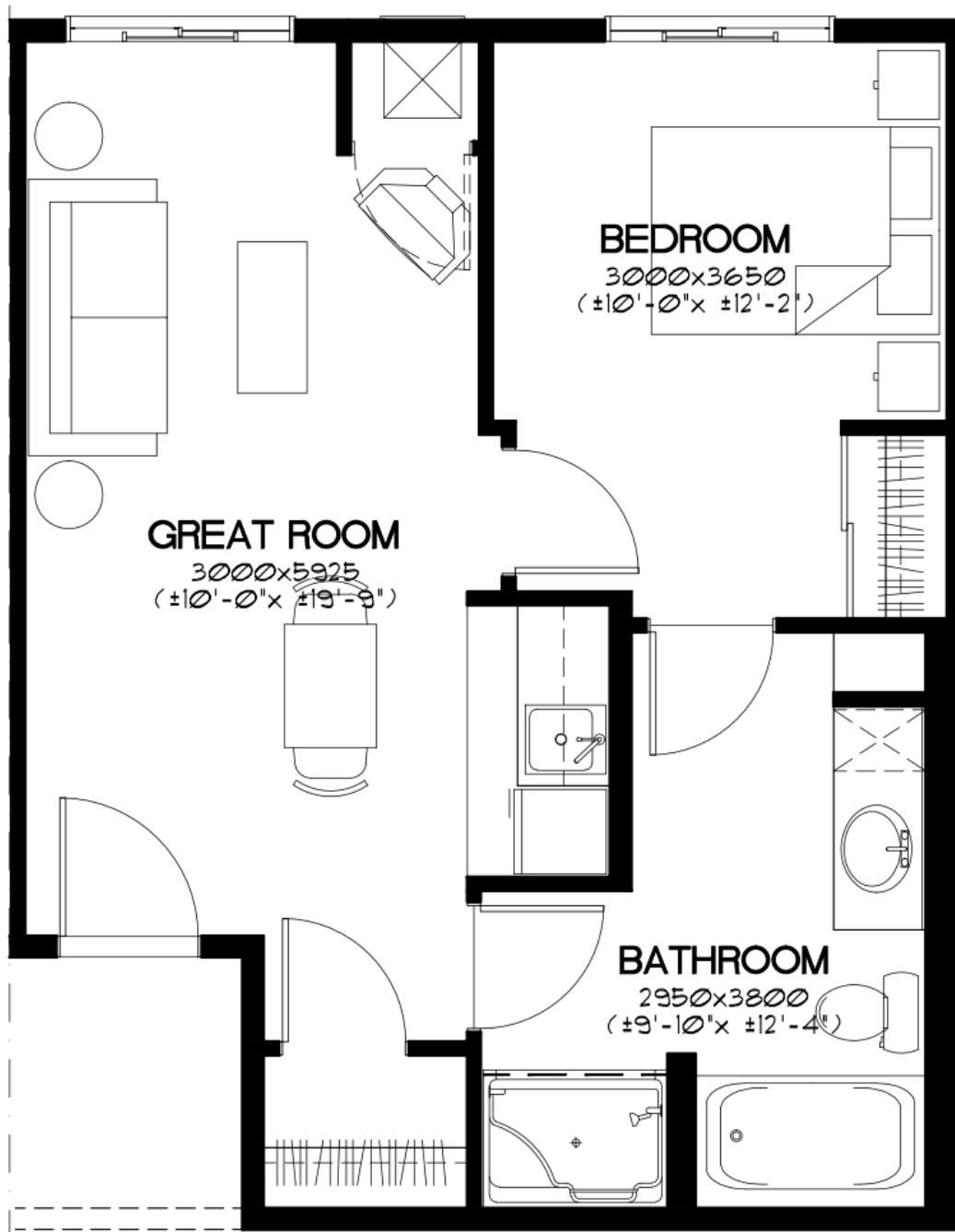


780-432-6900 | 949 Rutherford Road, Edmonton | rutherfordheights.com



RUTHERFORD HEIGHTS

An OPTIMA LIVING Community



Unit B-4 Approximately 541 sq. ft.

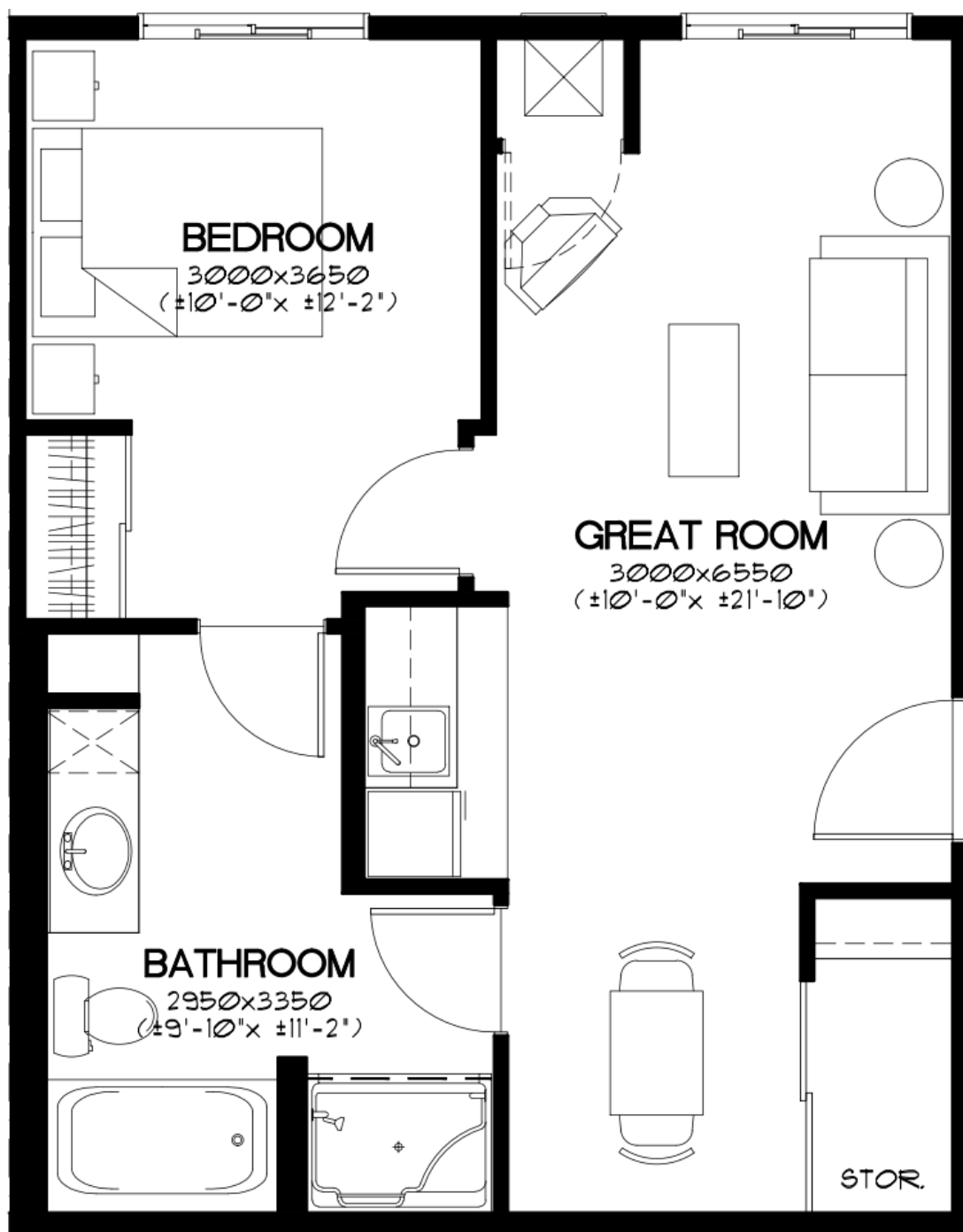


780-432-6900 | 949 Rutherford Road, Edmonton | rutherfordheights.com



RUTHERFORD HEIGHTS

An OPTIMA LIVING Community



Unit B-5-b Approximately 544 sq. ft.

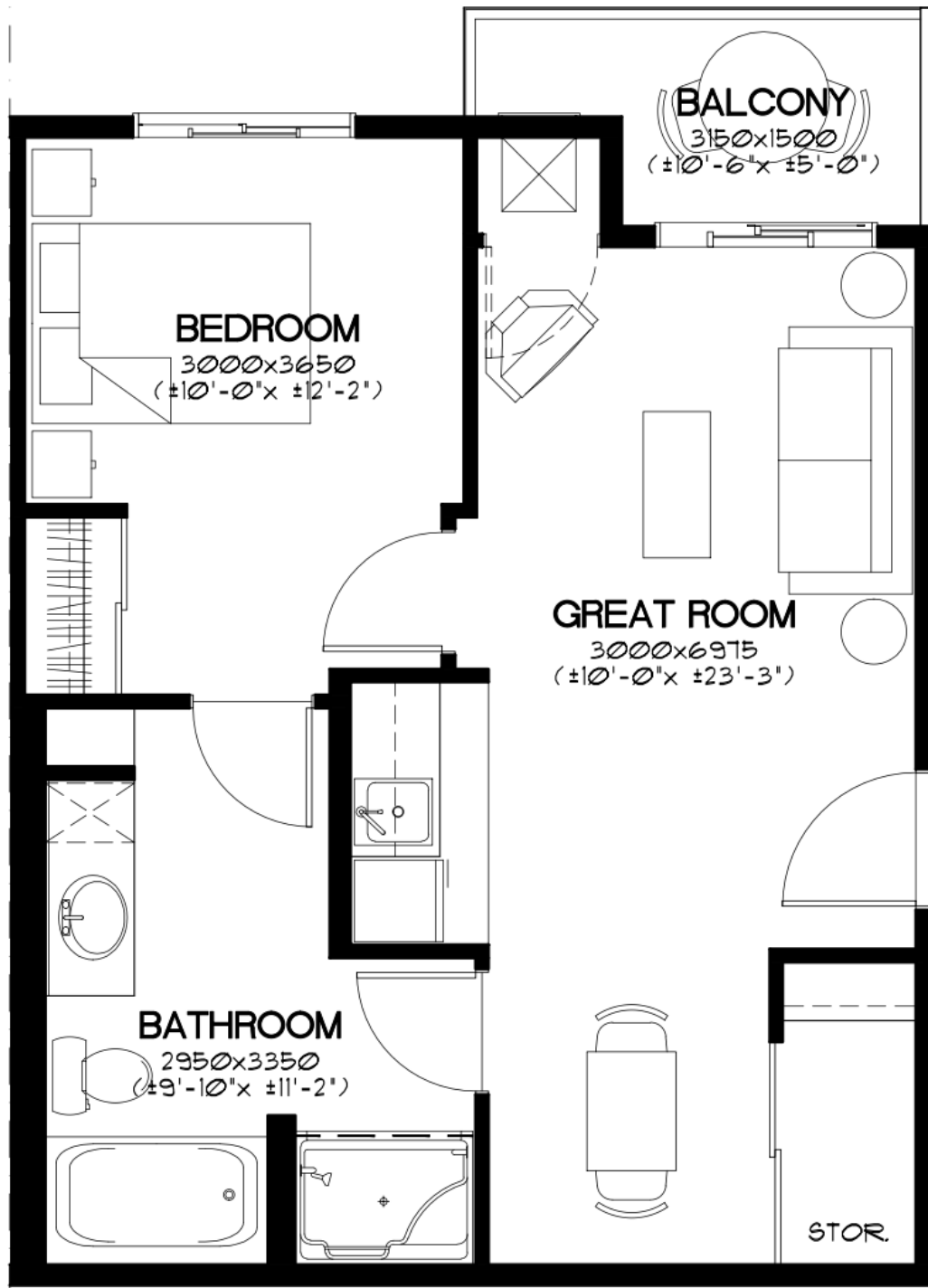


780-432-6900 | 949 Rutherford Road, Edmonton | rutherfordheights.com



RUTHERFORD HEIGHTS

An OPTIMA LIVING Community



Unit B-5-b Approximately 544 sq. ft.

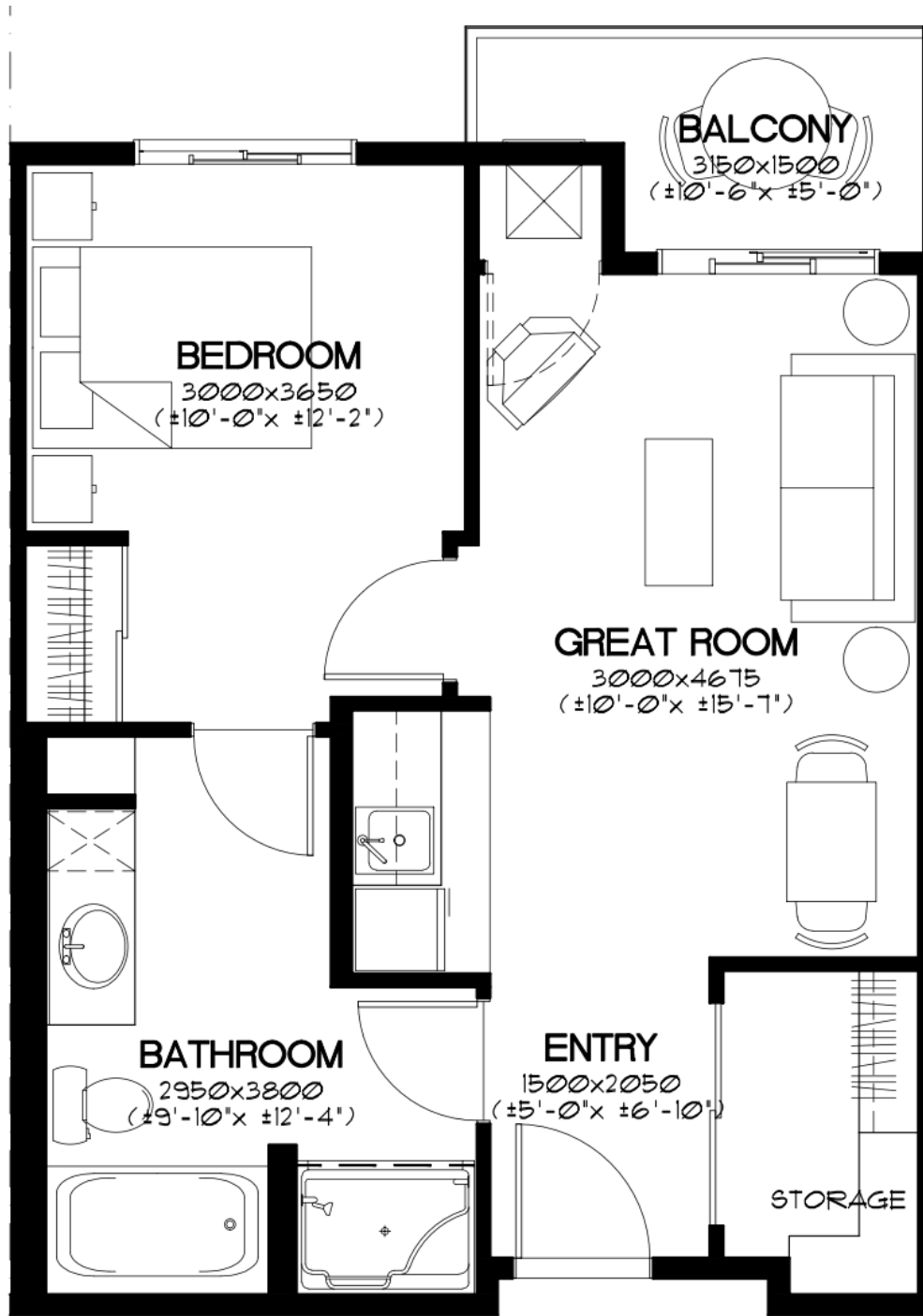


780-432-6900 | 949 Rutherford Road, Edmonton | rutherfordheights.com



RUTHERFORD HEIGHTS

An OPTIMA LIVING Community



Unit B Approximately 519 sq. ft.

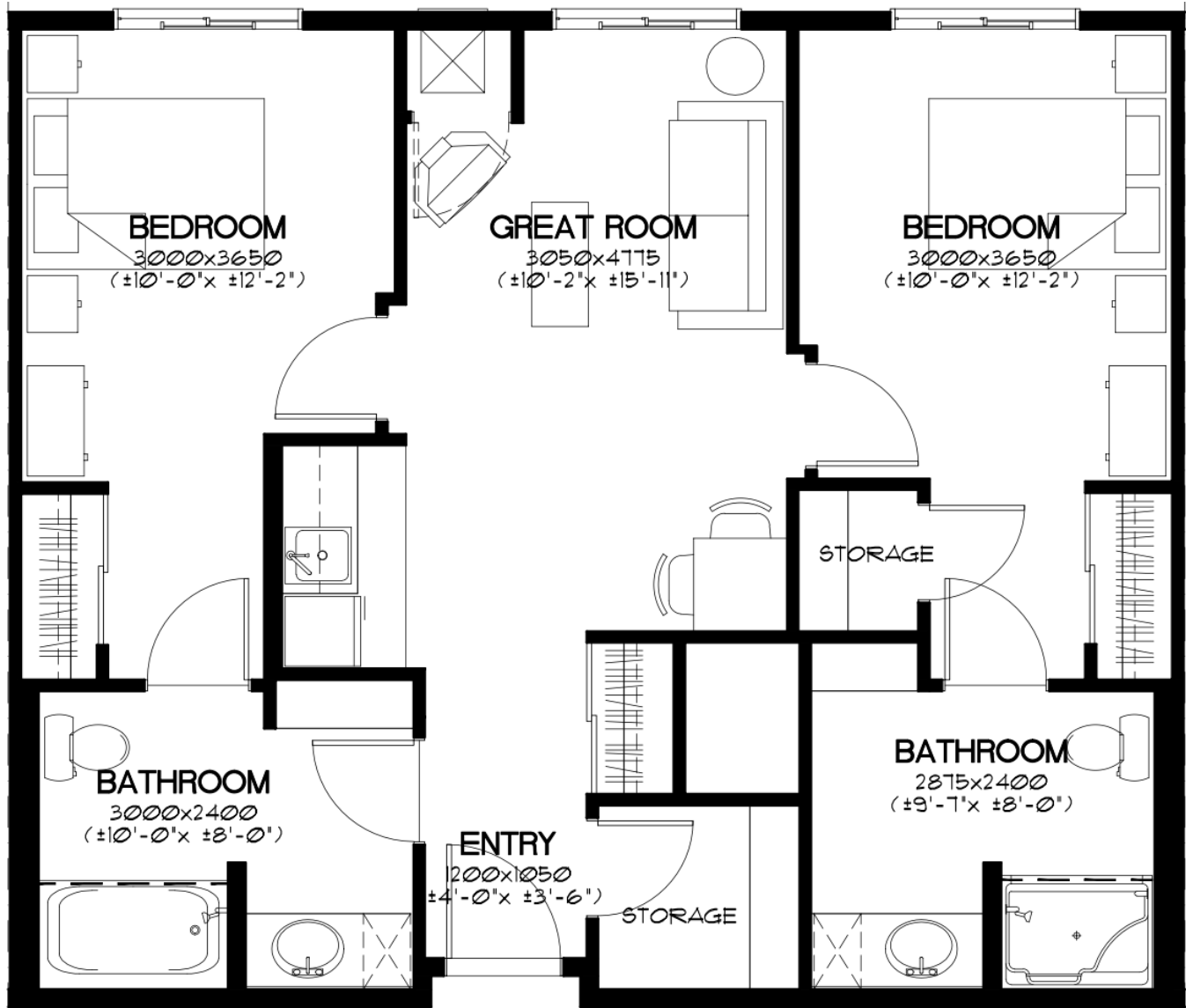


780-432-6900 | 949 Rutherford Road, Edmonton | rutherfordheights.com



RUTHERFORD HEIGHTS

An OPTIMA LIVING Community



Unit C-b Approximately 810 sq. ft.



780-432-6900 | 949 Rutherford Road, Edmonton | rutherfordheights.com



RUTHERFORD HEIGHTS

An OPTIMA LIVING Community



Unit C-c Approximately 793 sq. ft.

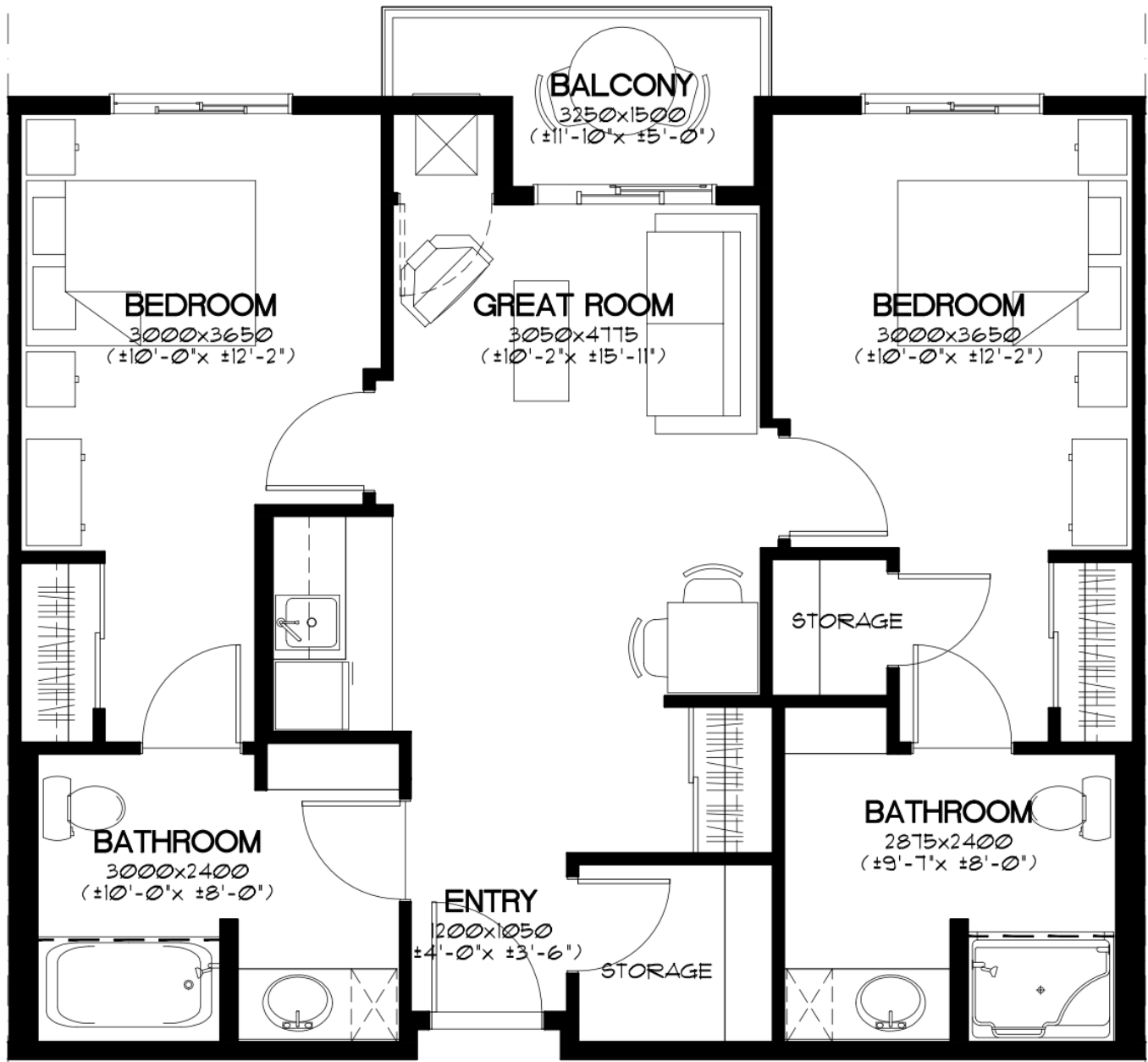


780-432-6900 | 949 Rutherford Road, Edmonton | rutherfordheights.com



RUTHERFORD HEIGHTS

An OPTIMA LIVING Community



Unit C Approximately 793 sq. ft.

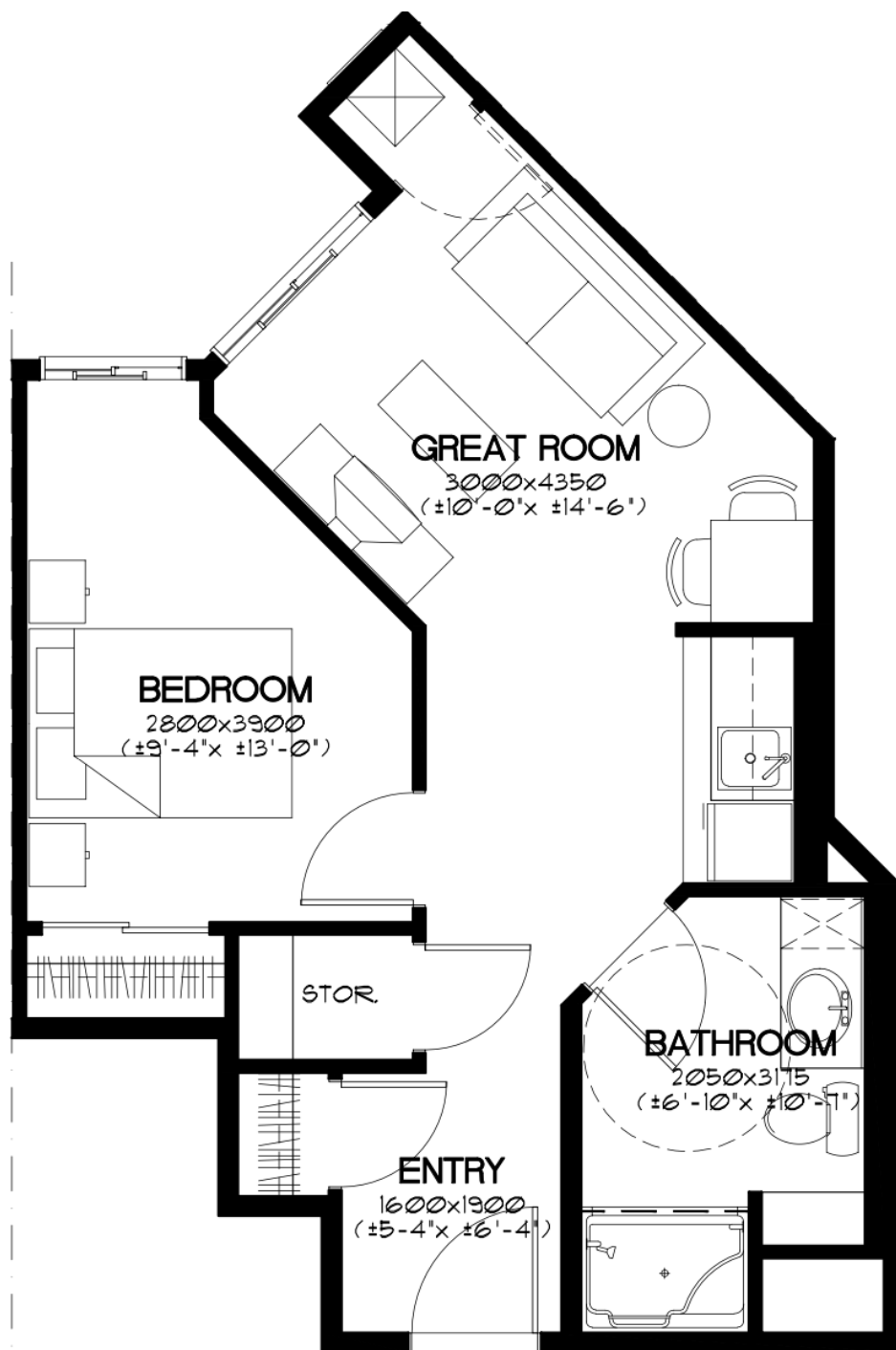


780-432-6900 | 949 Rutherford Road, Edmonton | rutherfordheights.com



RUTHERFORD HEIGHTS

An OPTIMA LIVING Community



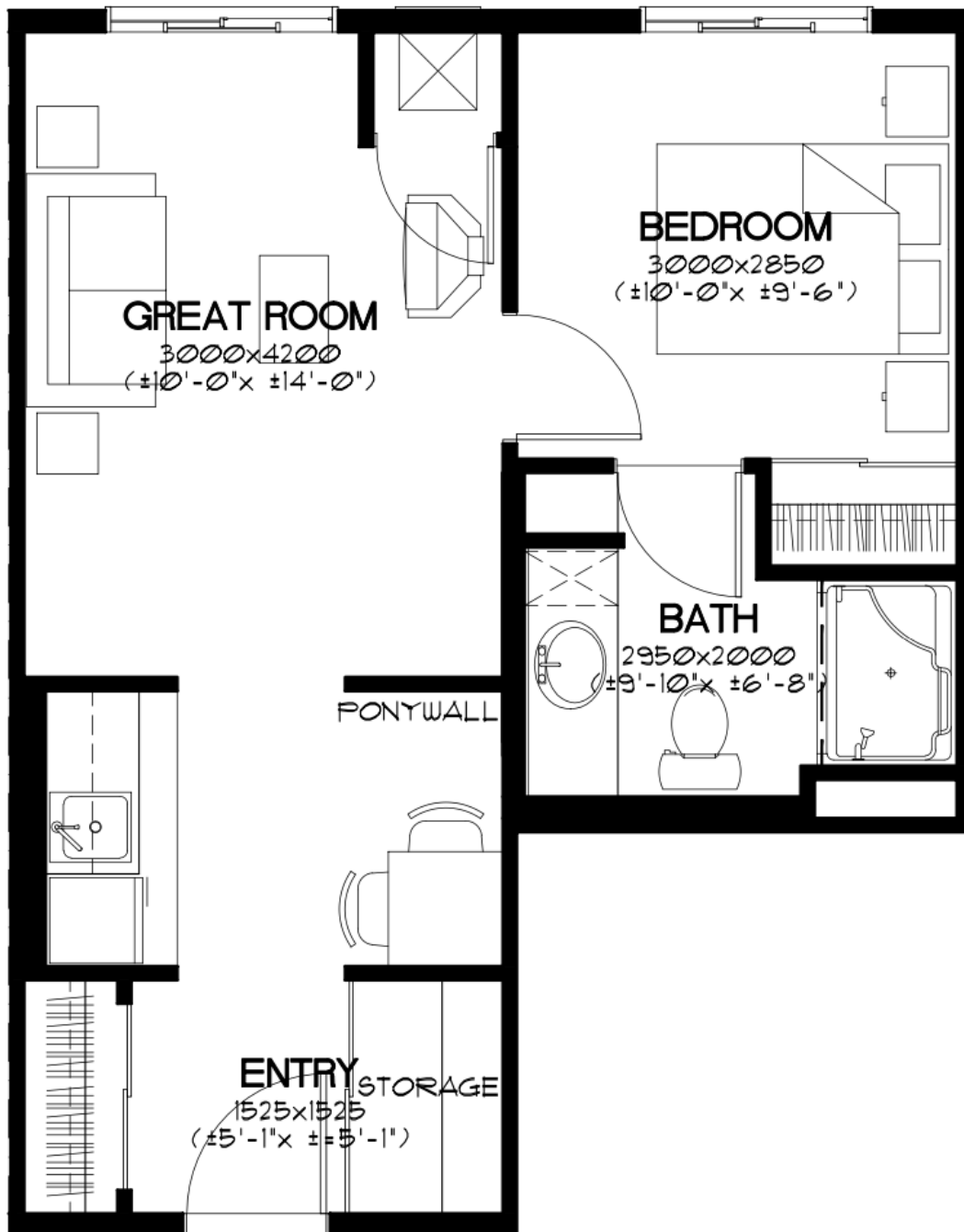
Unit DAL-2 Approximately 486 sq. ft.





RUTHERFORD HEIGHTS

An OPTIMA LIVING Community



Unit J-B-1 Approximately 459 sq. ft.

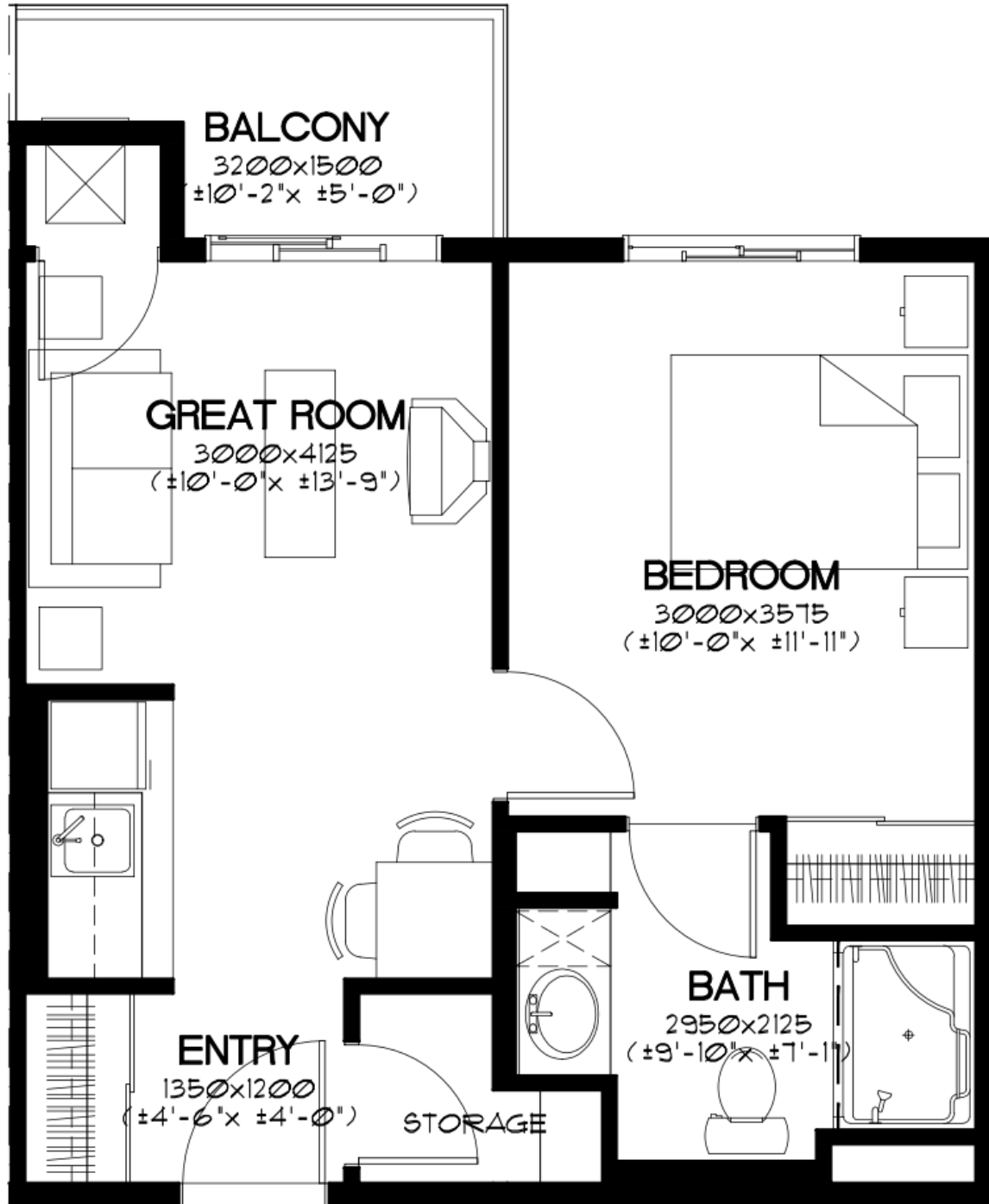


780-432-6900 | 949 Rutherford Road, Edmonton | rutherfordheights.com



RUTHERFORD HEIGHTS

An OPTIMA LIVING Community



Unit J-B Approximately 428 sq. ft.

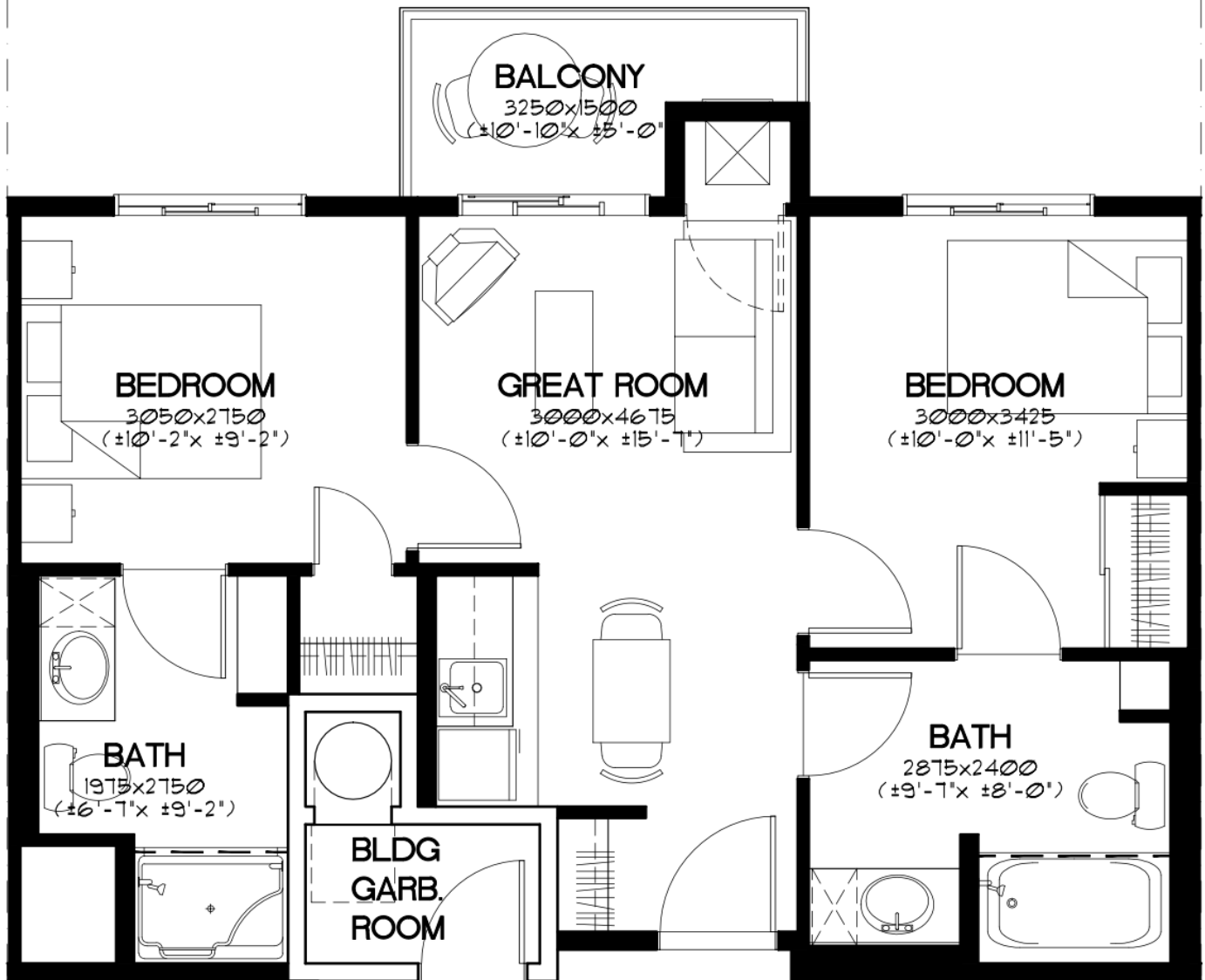


780-432-6900 | 949 Rutherford Road, Edmonton | rutherfordheights.com



RUTHERFORD HEIGHTS

An OPTIMA LIVING Community



Unit J-C-G Approximately 592 sq. ft.

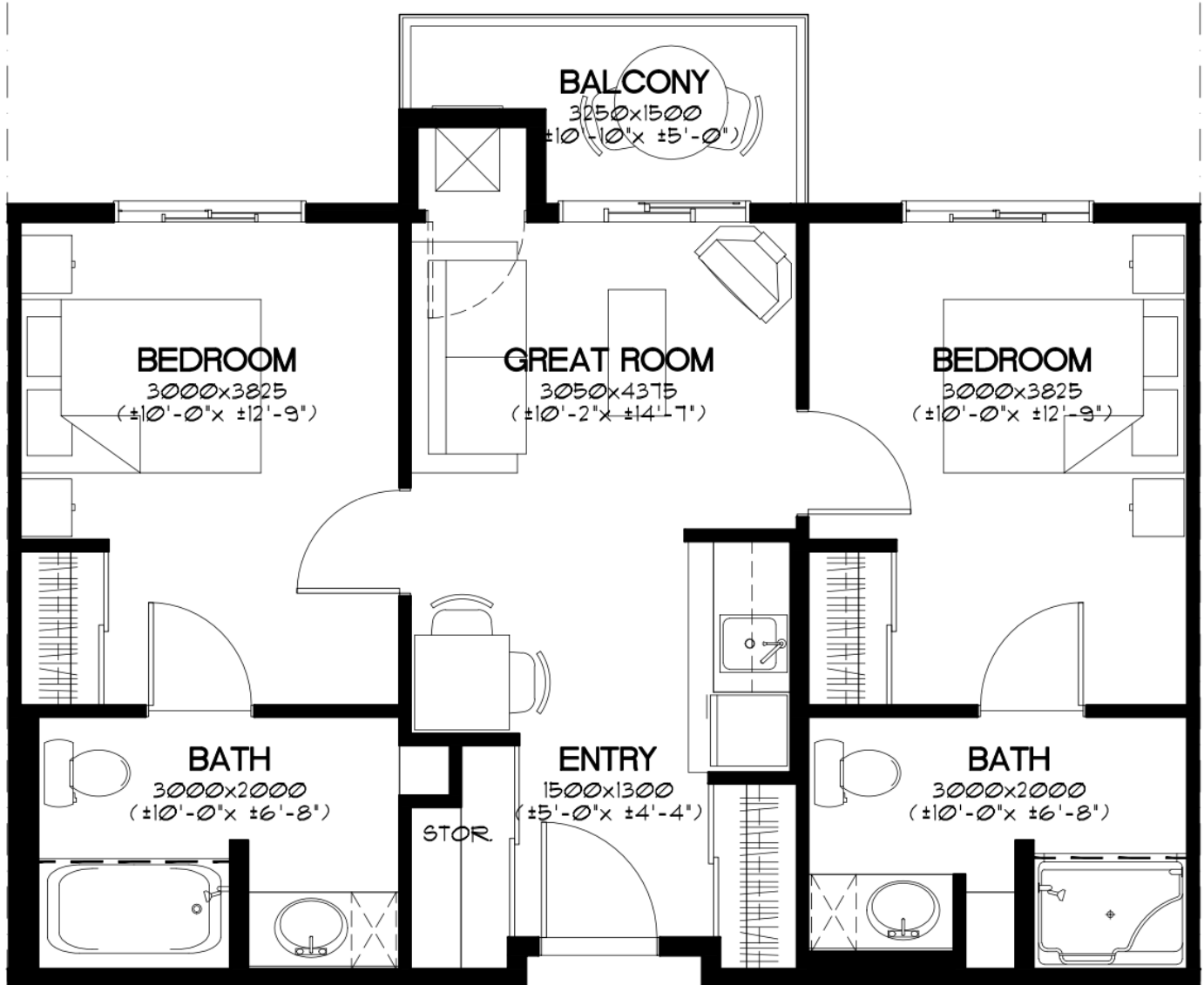


780-432-6900 | 949 Rutherford Road, Edmonton | rutherfordheights.com



RUTHERFORD HEIGHTS

An OPTIMA LIVING Community



Unit J-C Approximately 635 sq. ft.



780-432-6900 | 949 Rutherford Road, Edmonton | rutherfordheights.com